

MAC VALVES PACIFIC FITTINGS & TUBING GUIDE

LEGRIS / AIGNEP / BIMBA / ALWITCO
FREELIN-WADE / MINDMAN / OMAL



contents

PUSH-IN FITTINGS

Polymer	- <i>Tube-To-Tube, & Plug-In</i>	2 - 3
Food Grade	- <i>Legrif 'LIQUIfit' range</i>	4
Nickel-Plated Brass	- <i>Metric & High Pressure</i>	4 - 5
Nickel-Plated Brass	- <i>Imperial</i>	6
Stainless Steel	- <i>Push-In/Threaded</i>	6 - 7

PUSH-ON FITTINGS

Nickel-Plated Brass & Stainless Steel		8
---------------------------------------	--	---

THREADED FITTINGS & ADAPTORS

Brass, Nickel-Plated Brass, & Aluminium		9 - 10
---	--	--------

FUNCTION FITTINGS

Flow Control Regulators	- <i>Polymer/Metal, & Stainless Steel (Miniature, Compact)</i>	11 - 12
Axial & Actuator Valves	- <i>Nickel-Plated Brass & Aluminium/Stainless Steel</i>	12
Ball Valves	- <i>Polymer, Nickel-Plated Brass, & Stainless Steel</i>	13 - 14
Silencers	- <i>Polymer, Nickel-Plated Brass & Sintered Bronze</i>	14
Various	- <i>Non-Return, Pressure Reducer/Sensor, Blocking, Quick Exhaust</i>	15

ACCESSORIES

Blow Guns	- <i>Safety, Multi-Jet, Cannon, Button</i>	16
-----------	--	----

COUPLINGS

Automatic Quick-Couplings	- <i>Acetel, Polymer, Nickel-Plated Brass, S/Steel, Chrome</i>	17
---------------------------	--	----

HOSE & TUBING

Push-Lock Hose & Adaptors	- <i>Various Component Hose, Nickel-Plated Brass Adaptors</i>	18
Push-In Tubing & Accessories	- <i>Various Component Tubing, Tube Cutters & Clips</i>	18
Push-In Tubing	- <i>Chemical Resistance Chart</i>	19



PNEUMATIC, FLUID, & AGGRESSIVE APPLICATIONS

Push-In Fittings, Push-On Fittings, Flow Control Regulators,
Pneumatic Function Fittings & Valves, Blowguns, Couplers, Hose & Tubing

Mac Valves Pacific have an extensive range of polymer, nickel-plated, and stainless steel fittings, as well as safety accessories & tubing that suit most pneumatic, fluid, food-grade processing, aggressive fluids and other chemical applications.



Please contact us if you require a product that is not listed in this catalogue.

Push-In Fittings - Polymer/Threaded, Tube-To-Tube, Plug-In & Accessories

3175



Male Stud Fitting, Hexagonal, BSPT Thread, Polymer/Nickel-Plated



ØD	C	P/N
4	R1/8	3175 04 10
4	R1/4	3175 04 13
6	R1/8	3175 06 10
6	R1/4	3175 06 13
6	R3/8	3175 06 17
6	R1/2	3175 06 21
8	R1/8	3175 08 10
8	R1/4	3175 08 13
8	R3/8	3175 08 17
10	R1/4	3175 10 13
10	R3/8	3175 10 17
10	R1/2	3175 10 21
12	R3/8	3175 12 17
12	R1/2	3175 12 21
14	R3/8	3175 14 17
14	R1/2	3175 14 21

3101



Male Stud Fitting, Hexagonal, BSPP & Metric Thread, Polymer/Nickel-Plated



ØD	C	P/N
4	M5x0,8	3101 04 19
4	G1/8	3101 04 10
4	G1/4	3101 04 13
6	M5x0,8	3101 06 19
6	G1/8	3101 06 10
6	G1/4	3101 06 13
6	G3/8	3101 06 17
8	G1/8	3101 08 10
8	G1/4	3101 08 13
8	G3/8	3101 08 17
10	G1/4	3101 10 13
10	G3/8	3101 10 17
10	G1/2	3101 10 21
12	G3/8	3101 12 17
12	G1/2	3101 12 21
14	G3/8	3101 14 17
14	G1/2	3101 14 21

3109



Male Stud Elbow, BSPT Thread, Polymer/Nickel-Plated



ØD	C	P/N
4	R1/8	3109 04 10
4	R1/4	3109 04 13
4	R3/8	3109 04 17
6	R1/8	3109 06 10
6	R1/4	3109 06 13
6	R3/8	3109 06 17
8	R1/8	3109 08 10
8	R1/4	3109 08 13
8	R3/8	3109 08 17
10	R1/4	3109 10 13
10	R3/8	3109 10 17
10	R1/2	3109 10 21
12	R3/8	3109 12 17
12	R1/2	3109 12 21
14	R3/8	3109 14 17
14	R1/2	3109 14 21

3199



Male Stud Elbow, BSPP & Metric Thread, Polymer/Nickel-Plated



ØD	C	P/N
4	M5x0,8	3199 04 19
4	G1/8	3199 04 10
4	G1/4	3199 04 13
6	M5x0,8	3199 06 19
6	G1/8	3199 06 10
6	G1/4	3199 06 13
6	G3/8	3199 06 17
8	G1/8	3199 08 10
8	G1/4	3199 08 13
8	G3/8	3199 08 17
10	G1/4	3199 10 13
10	G3/8	3199 10 17
10	G1/2	3199 10 21
12	G3/8	3199 12 17
12	G1/2	3199 12 21
14	G3/8	3199 14 17
14	G1/2	3199 14 21

3129



Extended Male Stud Elbow, BSPT Thread, Polymer/Nickel-Plated



ØD	C	P/N
4	R1/8	3129 04 10
4	R1/4	3129 04 13
6	R1/8	3129 06 10
6	R1/4	3129 06 13
8	R1/8	3129 08 10
8	R1/4	3129 08 13
8	R3/8	3129 08 17
10	R1/4	3129 10 13
10	R3/8	3129 10 17
10	R1/2	3129 10 21

3169



Extended Male Stud Elbow, BSPP & Metric, Polymer/Nickel-Plated



ØD	C	P/N
4	M5x0,8	3169 04 19
4	G1/8	3169 04 10
6	M5x0,8	3169 06 19
6	G1/8	3169 06 10
6	G1/4	3169 06 13
8	G1/8	3169 08 10
8	G1/4	3169 08 13

3133



45° Male Elbow, BSPP & M5 Thread, Polymer/Nickel-Plated



ØD	C	P/N
4	M5x0,8	3133 04 19
4	G1/8	3133 04 10
6	M5x0,8	3133 06 19
6	G1/8	3133 06 10
6	G1/4	3133 06 13
8	G1/8	3133 08 10
8	G1/4	3133 08 13
8	G3/8	3133 08 17

3192



Female Stud Elbow, BSPP Thread, Polymer/Nickel-Plated



ØD	C	P/N
4	G1/8	3192 04 10
4	G1/4	3192 04 13
6	G1/8	3192 06 10
6	G1/4	3192 06 13
8	G1/8	3192 08 10
8	G1/4	3192 08 13

3113



45° Male Elbow, BSPT Thread, Polymer/Nickel-Plated



ØD	C	P/N
4	R1/8	3129 04 10
6	R1/8	3129 06 10
6	R1/4	3129 06 13
8	R1/8	3129 08 10
8	R1/4	3129 08 13
8	R3/8	3129 08 17

3114



Female Stud Fitting, BSPP & M5 Thread, Polymer/Nickel-Plated



ØD	C	P/N
4	M5x0,8	3114 04 19
4	G1/8	3114 04 10
4	G1/4	3114 04 13
6	G1/8	3114 06 10
6	G1/4	3114 06 13
8	G1/8	3114 08 10
8	G1/4	3114 08 13

3198



Male Stud Branch Tee, BSPP & M5 Thread, Polymer/Nickel-Plated



ØD	C	P/N
4	M5x0,8	3198 04 19
4	G1/8	3198 04 10
6	M5x0,8	3198 06 19
6	G1/8	3198 06 10
6	G1/4	3198 06 13
8	G1/8	3198 08 10
8	G1/4	3198 08 13

3102



Equal Elbow - Polymer/Nickel-Plated



ØD	P/N
4	3102 04 00
6	3102 06 00
8	3102 08 00
10	3102 10 00
12	3102 12 00
14	3102 14 00

3103

Male Stud Run Tee, BSPT & NPT Thread, Polymer/Threaded



ØD	C	P/N
4	R1/8	3103 04 10
4	R1/4	3103 04 13
6	R1/8	3103 06 10
6	R1/4	3103 06 13
8	R1/8	3103 08 10
8	R1/4	3103 08 13
8	R3/8	3103 08 17
10	R1/4	3103 10 13
10	R3/8	3103 10 17
10	R1/2	3103 10 21
12	R1/4	3103 12 13
12	R3/8	3103 12 17
12	R1/2	3103 12 21
14	R1/2	3103 14 21
16	R3/8	3103 14 17
16	R1/2	3103 12 21

3121

Plug-In - Male Standpipe, BSPT Thread, Polymer/Threaded



ØD	C	P/N
4	R1/8	3121 04 10
4	R1/4	3121 04 13
6	R1/8	3121 06 10
6	R1/4	3121 06 13
8	R1/8	3121 08 10
8	R1/4	3121 08 13
8	R3/8	3121 08 17
10	R1/4	3121 10 13
10	R3/8	3121 10 17
10	R1/2	3121 10 21
12	R3/8	3121 12 17
12	R1/2	3121 12 21
14	R1/2	3121 14 21

3136

Female Bulkhead Connector, BSPP Thread, Polymer/Threaded



ØD	C	P/N
4	G1/8	3136 04 10
4	G1/4	3136 04 13
6	G1/8	3136 06 10
6	G1/4	3136 06 13
8	G1/8	3136 08 10
8	G1/4	3136 08 13

3148

Y Male Connector, Tube-To-NPT or BSPT, Polymer/Threaded



ØD	C	P/N
5/32	R1/8	3148 04 10
5/32	R1/4	3148 04 13
5/16	R1/8	3148 08 10
5/16	R1/4	3148 08 13
5/16	R3/8	3148 08 17

3139

Equal Bulkhead Elbow, Polymer/Threaded



ØD	C	P/N
4	16	3139 04 00
6	18	3139 06 00
8	21,5	3139 08 00

3304

Multiple 'Y' Piece, Equal & Unequal, Polymer



ØD1	ØD2	P/N
6	4	3304 06 04
8	4	3304 08 04
8	6	3304 08 06
10	6	3304 06 06
10	8	3304 06 08

3306

Unequal Multiple Elbow With Fixing Holes, Polymer



ØD1	ØD2	P/N
6	4	3306 06 04
8	4	3306 08 04
8	6	3306 08 06
10	6	3306 10 06
10	8	3306 10 08

3107

Equal Cross With Fixing Holes, Polymer



ØD1	ØD2	P/N
6	4	3107 06 04
8	4	3107 08 04
8	6	3107 08 06
10	6	3107 10 06
10	8	3107 10 08

3116

Bulkhead Connector, Polymer



ØD	C	P/N
4	16	3116 04 00
6	18	3116 06 00
8	21,5	3116 08 00
10	26	3116 10 00
12	31	3116 12 00
14	34,5	3116 14 00

3106

Straight Connector, Polymer



ØD	P/N
4	3106 04 00
6	3106 06 00
8	3106 08 00
10	3106 10 00
12	3106 12 00
14	3106 14 00

3166

Reducer, Polymer



ØD	C	P/N
4	6	3166 04 06
4	8	3166 04 08
6	8	3166 06 08
6	10	3166 06 10
8	10	3166 08 10
8	12	3166 08 12
8	14	3166 08 14
10	12	3166 10 12
10	14	3166 10 14
12	14	3166 12 14

3104

Equal & Unequal Tee, Polymer



ØD1	ØD2	P/N
4	4	3104 04 00
6	6	3104 06 00
6	4	3104 06 04
8	8	3104 08 00
8	6	3104 08 06
10	10	3104 10 00
10	8	3104 10 08
12	12	3104 12 00
14	14	3104 14 00

3182

Equal Compact Elbow, Plastic Tailpiece, Polymer



ØD	C	P/N
4	4	3182 04 00
6	6	3182 06 00
8	8	3182 08 00

3140

Single 'Y' Piece, Equal & Unequal, Polymer



ØD1	ØD2	P/N
4	4	3140 04 00
4	6	3140 04 06
6	6	3140 06 00
6	8	3140 08 08
8	8	3140 08 00

3151

Female Plug With Instant Connection, Polymer



ØD	C	P/N
4	4	3151 04 00
6	6	3151 06 00
8	8	3151 08 00
10	10	3151 10 00
12	12	3151 12 00

3188

Equal Compact Tee, Plastic Tailpiece, Polymer



ØD	C	P/N
4	4	3188 04 00
6	6	3188 06 00
8	8	3188 08 00

3144

Multiple 'Y' Piece, Equal & Unequal, Polymer



ØD1	ØD2	P/N
4	4	3144 04 04
4	6	3144 04 06
6	6	3144 06 06
6	8	3144 06 08

3188

Increases, Polymer



ØD	C	P/N
6	4	3188 06 04
8	6	3188 08 06
10	8	3188 10 08

3120

Double Male Stem Connector, Polymer



ØD	P/N
4	3120 06 00
6	3120 08 00
8	3120 10 00

3126

Blanking Plug, Polymer



ØD	P/N
4	3126 04 00
6	3126 06 00
8	3126 08 00

Push-In Fittings - LIQUIfit Food Grade

Legris LIQUIfit

The LIQUIfit body is manufactured from a unique bio-based, high performance polymer produced from renewable plants, to expand the use of non-fossil-based resources. Legris LIQUIfit fittings offers an “eco-designed” innovative alternative for water & beverage applications; no fluid contamination occurs and environmental protection is guaranteed.

Markets:

Water Filtration • Beverage Dispensing • Life Science • Bottling • Semi-Conductor • Medical

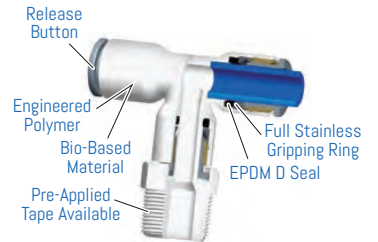
Applications:

Water Purification Systems • Water Dispensers • Hot & Cold Drink Dispensers
Cooling Systems • Food Process • CO2

Features & Benefits:

Stainless steel grab ring • EPDM D-seal • Meets requirements of FDA, NSF 51 and NSF 61
D-seal provides a positive seal on the O.D. of the tube • High chemical resistance
Inch & metric sizes, 5/32" - 1/2", 4mm - 12mm • NPTF, UNS, BST threads

For more information and ordering please contact MVP.



Push-In Fittings - Nickel-Plated Brass

3601

Male Stud, BSP Parallel & Metric, Nickel-Plated Brass

ØD	C	P/N
4	M5x0,8	3601 04 19
4	G1/8	3601 04 10
4	G1/4	3601 04 13
6	M5x0,8	3601 06 19
6	G1/8	3601 06 10
6	G1/4	3601 06 13
8	G1/8	3601 08 10
8	G1/4	3601 08 13
8	G3/8	3601 08 17
10	G1/4	3601 10 13
10	G3/8	3601 10 17
10	G1/2	3601 10 21
12	G1/4	3601 12 13
12	G3/8	3601 12 17
12	G1/2	3601 12 21
14	G3/8	3601 14 17
14	G1/2	3601 14 21

57000

Straight Male Adaptor Universal Short, Nickel-Plated Brass

ØD	C	P/N
6	1/8	57000 00 002
6	1/4	57000 00 003
6	3/8	57000 00 014
6	1/2	57000 00 015
10	1/4	57000 00 007
10	3/8	57000 00 008
10	1/2	57000 00 017
12	1/4	57000 00 009
12	3/8	57000 00 010
12	1/2	57000 00 018
14	3/8	57000 00 019
14	1/2	57000 00 020

57030

Straight Female Adaptor, Nickel-Plated Brass

ØD	C	P/N
4	M5	57030 00 008
4	1/8	57030 00 001
4	1/4	57030 00 009
5	1/8	57030 00 006
6	1/8	57030 00 002
6	1/4	57030 00 003
8	1/8	57030 00 004
8	1/4	57030 00 005
8	3/8	57030 00 010
10	1/4	57030 00 011
10	3/8	57030 00 012
10	1/2	57030 00 013
12	3/8	57030 00 014
12	1/2	57030 00 015

3699

Male Stud Elbow, BSPP & Metric Thread, Nickel-Plated Brass

ØD	C	P/N
4	M5x0,8	3699 04 19
4	G1/8	3699 04 10
4	G1/4	3699 04 13
6	G1/8	3699 06 10
6	G1/4	3699 06 13
8	G1/8	3699 08 10
8	G1/4	3699 08 13
8	G3/8	3699 08 17
10	G1/4	3699 10 13
10	G3/8	3699 10 17
12	G1/4	3699 12 13
12	G3/8	3699 12 17
12	G1/2	3699 12 21
14	G3/8	3699 14 17
14	G1/2	3699 14 21

57111

Orienting Elbow Male Adaptor, Universal Short, Nickel-Plated Brass

ØD	C	P/N
6	1/8	57111 00 004
6	1/4	57111 00 005
10	1/4	57111 00 010
10	3/8	57111 00 011
10	1/2	57111 00 012
12	3/8	57111 00 013
12	1/2	57111 00 014
14	3/8	57111 00 015
14	1/2	57111 00 016

3602

Equal Elbow, Nickel-Plated Brass

ØD	P/N
4	3602 04 00
6	3602 06 00
8	3602 08 00
10	3602 10 00
12	3602 12 00
14	3602 14 00

57130

Equal Elbow, Nickel-Plated Brass

ØD	P/N
4 (5/32)	*57130 00 001
5	57130 00 006
6	57130 00 002
8 (5/16)	*57130 00 003
10	57130 00 004
12	57130 00 005
14	57130 00 008

3669

Extended Male Stud Elbow, BSPP & Metric, Nickel-Plated Brass

ØD	C	P/N
4	M5x0,8	3669 04 19
4	G1/8	3669 04 10
6	G1/8	3669 06 10
6	G1/4	3669 06 13
8	G1/8	3669 08 10
8	G1/4	3669 08 13

3604

Equal Tee, Nickel-Plated Brass



ØD	P/N
4	3604 04 00
6	3604 06 00
8	3604 08 00
10	3604 10 00
12	3604 12 00
14	3604 14 00

57230

Tee Connector, Nickel-Plated Brass



ØD	P/N
4 (5/32)	*57230 00 001
5	57230 00 006
6	57230 00 002
8 (5/16)	*57230 00 003
10	57230 00 004
12	57230 00 005
14	57230 00 008

3698

Male Stud Branch Tee, BSPP & Metric, Nickel-Plated Brass



ØD	C	P/N
4	M5x0,8	3698 04 19
4	G1/8	3698 04 10
6	G1/8	3698 06 10
6	G1/4	3698 06 13
8	G1/8	3698 08 10
8	G1/4	3698 08 13

57211

Orienting Tee Male Adaptor Universal Short - Centre Leg, Nickel-Plated Brass



ØD	C	P/N
6	1/8	57211 00 004
6	1/4	57211 00 005
10	1/4	57211 00 010
10	3/8	57211 00 011
10	1/2	57211 00 012
12	3/8	57211 00 013
12	1/2	57211 00 014

57223

Orienting Tee Male Adaptor Universal Short Off-Set Leg, Nickel-Plated Brass



ØD	C	P/N
6	1/8	57223 00 004
6	1/4	57223 00 005
10	1/4	57223 00 010
10	3/8	57223 00 011
10	1/2	57223 00 012
12	3/8	57223 00 013
12	1/2	57223 00 014

3693

Male Stud Run Tee, BSPP & Metric, Nickel-Plated Brass



ØD	C	P/N
4	M5x0,8	3693 04 19
4	G1/8	3693 04 10
6	G1/8	3693 06 10
6	G1/4	3693 06 13
8	G1/8	3693 08 10
8	G1/4	3693 08 13

57040

Tube-To-Tube Connector, Nickel-Plated Brass



ØD	C	P/N
4 (5/32)		57040 00 001
5		57040 00 008
6	4	57040 00 002
6		57040 00 003
8	6	57040 00 004
8 (5/16)		57040 00 005
10	8	57040 00 011
10		57040 00 006
12	10	57040 00 012
12		57040 00 007
14		57040 00 010

3606

Equal Tube-To-Tube Connector, Nickel-Plated Brass



ØD	P/N
4	3606 04 00
6	3606 06 00
8	3606 08 00
10	3606 10 00
12	3606 12 00
14	3606 14 00

57310

Y Connector, Nickel-Plated Brass



ØD	P/N
4 (5/32)	*57310 00 001
5	57310 00 004
6	57310 00 002
8 (5/16)	*57310 00 003
10	57310 00 008

3616

Equal Bulkhead Connector, Nickel-Plated Brass



ØD	P/N
4	3616 04 00
6	3616 06 00
8	3616 08 00
10	3616 10 00
12	3616 12 00
14	3616 14 00

57050

Bulkhead Connector, Nickel-Plated Brass



ØD	C	P/N
4 (5/32)	M12	57050 00 001
5	M14	57050 00 006
6	M14	57050 00 002
8 (5/16)	M16	57050 00 003
10	M20	57050 00 004
12	M22	57050 00 005

3666

Plug-In Reducer, Nickel-Plated Brass



ØD1	ØD2	P/N
4	6	3666 04 06
4	8	3666 04 08
6	8	3666 06 08
6	10	3666 06 10
6	12	3666 06 12
8	10	3666 08 10
8	12	3666 08 12
8	14	3666 08 14
10	12	3666 10 12
10	14	3666 10 14
12	14	3666 12 14

3668

Plug-In Increaser, Nickel-Plated Brass



ØD1	ØD2	P/N
6	4	3668 06 04

Push-In Fittings - High Pressure

58000

High Pressure - Straight Male Adaptor (Taper), Nickel-Plated Brass



ØD	C	P/N
4	M6x1	58000 00 001
4	M8x1	58000 00 002
4	M10x1	58000 00 003
4	1/8	58000 00 004
6	M6x1	58000 00 005
6	M8x1	58000 00 006
6	M10x1	58000 00 007
6	1/8	58000 00 008

58040

High Pressure - Straight Connector, Nickel-Plated Brass



ØD	P/N
4	58040 00 001
6	58040 00 002

58100

High Pressure - Fixed Elbow Male Adaptor (Taper), Nickel-Plated Brass



ØD	C	P/N
4	M6x1	58100 00 001
4	M8x1	58100 00 002
4	M10x1	58100 00 003
4	1/8	58100 00 004
6	M6x1	58100 00 005
6	M8x1	58100 00 006
6	M10x1	58100 00 007
6	1/8	58100 00 008

58111

High Pressure - Orienting Elbow Male Adaptor (Taper), Nickel-Plated Brass



ØD	C	P/N
4	M6x1	58111 00 001
4	M8x1	58111 00 002
4	M10x1	58111 00 003
4	1/8	58111 00 004
6	M6x1	58111 00 005
6	M8x1	58111 00 006
6	M10x1	58111 00 007
6	1/8	58111 00 008

Push-In Fittings - Imperial Fittings

89010

Inch Tube - Straight Male Adaptor, Nickel-Plated Brass

ØD	C	P/N
5/32 (4)	1/8	89010 00 008
5/16 (8)	1/8	89010 00 001
5/16 (8)	1/4	89010 00 009

89040

Inch Tube - Straight Connector, Nickel-Plated Brass

ØD	ØD	P/N
1/8		89040 00 001
1/4		89040 00 003
1/4		89040 00 004
3/8	1/4	89040 00 006
3/8	1/2	89040 00 009
3/8		89040 00 007
1/2		89040 00 008

89116

Inch Tube - Orienting Elbow Male Adaptor (Parallel), Nickel-Plated Brass

ØD	C	P/N
1/8	10/32	89116 00 001
5/32(4)	10/32	89116 00 002
1/4	10/32	89116 00 003

89050

Inch Tube - Bulkhead Connector, Nickel-Plated Brass

ØD	C	P/N
1/8	M10x1	89050 00 001
1/4	M14x1	89050 00 003
3/8	M20x1	89050 00 005
1/2	M22x1	89050 00 006

89130

Inch Tube - Elbow Connector, Nickel-Plated Brass

ØD	P/N
1/8	89130 00 001
1/4	89130 00 002
3/8	89130 00 003
1/2	89130 00 004

89216

Inch Tube - Orienting Tee Male Adaptor - Parallel - Centre Leg, Nickel-Plated Brass

ØD	C	P/N
1/8	10/32	89216 00 001
5/32 (4)	10/32	89216 00 002
1/4	10/32	89216 00 003

89230

Inch Tube - Tee Connector, Nickel-Plated Brass

ØD	P/N
1/8	89230 00 001
1/4	89230 00 003
3/8	89230 00 005
1/2	89230 00 006

89310

Inch Tube - Y Connector, Nickel-Plated Brass

ØD	P/N
1/8	89310 00 001
1/4	89310 00 003
3/8	89310 00 005

89000

Inch Tube - Straight Male Adaptor - Universal Short, Nickel-Plated Brass

ØD	C	P/N
1/8	10/32	89000 00 019
1/8	1/8	89000 00 001
1/8	1/4	89000 00 002
5/32 (4)	10/32	89000 00 020
5/32 (4)	1/8	89000 00 003
5/32 (4)	1/4	89000 00 004
1/4	10/32	89000 00 021
1/4	1/8	89000 00 005
1/4	1/4	89000 00 006
1/4	3/8	89000 00 007
5/16 (8)	1/8	89000 00 008
5/16 (8)	1/4	89000 00 009
5/16 (8)	3/8	89000 00 010
5/16 (8)	1/2	89000 00 022
3/8	1/8	89000 00 011
3/8	1/4	89000 00 012
3/8	3/8	89000 00 013
3/8	1/2	89000 00 014
1/2	1/8	89000 00 015
1/2	1/4	89000 00 016
1/2	3/8	89000 00 017
1/2	1/2	89000 00 018

89111

Inch Tube - Orienting Elbow Male Adaptor - Universal Short, Nickel-Plated Brass

ØD	ØD	P/N
1/8	1/8	89111 00 001
1/8	1/4	89111 00 002
5/32 (4)	1/8	89111 00 003
5/32 (4)	1/4	89111 00 004
1/4	1/8	89111 00 005
1/4	1/4	89111 00 006
1/4	3/8	89111 00 007
5/16 (8)	1/8	89111 00 008
5/16 (8)	1/4	89111 00 009
5/16 (8)	3/8	89111 00 010
5/16 (8)	1/2	89111 00 018
3/8	1/8	89111 00 011
3/8	1/4	89111 00 012
3/8	3/8	89111 00 013
3/8	1/2	89111 00 014
1/2	1/4	89111 00 015
1/2	3/8	89111 00 016
1/2	1/2	89111 00 017

89211

Inch Tube - Orienting Tee Male Adaptor - Universal Short, Nickel-Plated Brass

ØD	C	P/N
1/8	1/8	89211 00 001
1/8	1/4	89211 00 002
5/32 (4)	1/8	89211 00 003
5/32 (4)	1/4	89211 00 004
1/4	1/8	89211 00 005
1/4	1/4	89211 00 006
1/4	3/8	89211 00 007
5/16 (8)	1/8	89211 00 016
5/16 (8)	1/4	89211 00 015
5/16 (8)	3/8	89211 00 017
3/8	1/8	89211 00 014
3/8	1/4	89211 00 008
3/8	3/8	89211 00 009
3/8	1/2	89211 00 010
1/2	1/4	89211 00 011
1/2	3/8	89211 00 012
1/2	1/2	89211 00 013

89223

Inch Tube - Orienting Tee Male Adaptor Uni. Short - Offset Leg, Nickel-Plated Brass

ØD	C	P/N
1/8	1/8	89223 00 001
1/8	1/4	89223 00 002
5/32 (4)	1/8	89223 00 003
5/32 (4)	1/4	89223 00 004
1/4	1/8	89223 00 005
1/4	1/4	89223 00 006
1/4	3/8	89223 00 007
5/16 (8)	1/8	89223 00 015
5/16 (8)	1/4	89223 00 016
5/16 (8)	3/8	89223 00 017
3/8	1/8	89223 00 014
3/8	1/4	89223 00 008
3/8	3/8	89223 00 009
3/8	1/2	89223 00 010
1/2	1/4	89223 00 011
1/2	3/8	89223 00 012
1/2	1/2	89223 00 013

Push-In Fittings - Stainless Steel

60000

Stainless Steel - Straight Male Adaptor (Taper)

ØD	C	P/N
4	1/8	60000 00 001
4	1/4	60000 00 002
6	1/8	60000 00 003
6	1/4	60000 00 004
8	1/8	60000 00 005
8	1/4	60000 00 006
10	1/4	60000 00 007
10	3/8	60000 00 008
12	3/8	60000 00 009
12	1/2	60000 00 010

3805

Stainless Steel - Male Stud, BSPT Thread

ØD	C	P/N
4	R1/8	3805 04 10
4	R1/4	3805 04 13
6	R1/8	3805 06 10
6	R1/4	3805 06 13
8	R1/8	3805 08 10
8	R1/4	3805 08 13
8	R3/8	3805 08 17
10	R1/4	3805 10 13
10	R3/8	3805 10 17
12	R1/4	3805 12 13
12	R3/8	3805 12 17
12	R1/2	3805 12 21

3801

Stainless Steel - Male Stud With FKM Seals, BSP, Parallel Metric & UNF

ØD	C	P/N
4	R1/8	3801 04 10
4	M5x0,8	3801 04 19
6	R1/8	3801 06 10
6	R1/4	3801 06 13
6	M5x0,8	3801 06 19
8	R1/8	3801 08 10
8	R1/4	3801 08 13
8	R3/8	3801 08 17
10	R1/4	3801 10 13
10	R3/8	3801 10 17
12	R1/4	3801 12 13
12	R3/8	3801 12 17

60020

Stainless Steel - Straight Male Adaptor

ØD	C	P/N
4	M5	60020 00 011
4	1/8	60020 00 001
4	1/4	60020 00 002
6	M5	60020 00 013
6	1/8	60020 00 003
6	1/4	60020 00 004
8	1/8	60020 00 005
8	1/4	60020 00 006
10	1/4	60020 00 007
10	3/8	60020 00 008
10	1/2	60020 00 012
12	3/8	60020 00 009
12	1/2	60020 00 010

3809



Stainless Steel - **Male Stud Elbow**, BSPT & Metric Thread

ØD	C	P/N
4	M5x0,8	*3899 04 19
4	R1/8	3809 04 10
6	R1/8	3809 06 10
6	R1/4	3809 06 13
8	R1/8	3809 08 10
8	R1/4	3809 08 13
10	R1/8	3809 10 13
10	R1/4	3809 10 17

3889



Stainless Steel - **Compact Male Stud Elbow**, BSPT Thread

ØD	C	P/N
4	R1/8	3889 04 10
4	R1/4	3889 04 13
6	R1/8	3889 06 10
6	R1/4	3889 06 13
8	R1/8	3889 08 10
8	R1/4	3889 08 13
10	R1/4	3889 10 13
10	R3/8	3889 10 17
12	R1/4	3889 12 13
12	R3/8	3889 12 17
12	R1/2	3889 12 21

60110



Stainless Steel - **Orienting Elbow Male Adapter** (Taper)

ØD	C	P/N
4	1/8	60110 00 001
4	1/4	60110 00 002
6	1/8	60110 00 003
6	1/4	60110 00 004
8	1/8	60110 00 005
8	1/4	60110 00 006
10	1/4	60110 00 007
10	3/8	60110 00 008
10	1/2	60110 00 009
12	3/8	60110 00 010
12	1/2	60110 00 011

60115



Stainless Steel - **Orienting Elbow Male Adapter** (Parallel)

ØD	C	P/N
4	M5	60115 00 012
4	1/8	60115 00 001
4	1/4	60115 00 002
6	M5	60115 00 013
6	1/8	60115 00 003
6	1/4	60115 00 004
8	1/8	60115 00 005
8	1/4	60115 00 006
10	1/4	60115 00 007
10	3/8	60115 00 008
10	1/2	60115 00 009
12	3/8	60115 00 010
12	1/2	60115 00 011

3802



Stainless Steel - **Equal Elbow**

ØD	P/N
4	3802 04 00
6	3802 06 00
8	3802 08 00
10	3802 10 00
12	3802 12 00

60130



Stainless Steel - **Elbow Connector**

ØD	P/N
4	60130 00 001
6	60130 00 002
8	60130 00 003
10	60130 00 004
12	60130 00 005

3804



Stainless Steel - **Equal Tee**

ØD	P/N
4	3804 04 00
6	3804 06 00
8	3804 08 00
10	3804 10 00
12	3804 12 00

60230



Stainless Steel - **Tee Connector**

ØD	P/N
4	60230 00 001
6	60230 00 002
8	60230 00 003
10	60230 00 004
12	60230 00 005

60215



Stainless Steel - **Orienting Tee Male Adapter** (Taper) Centre Leg

ØD	C	P/N
4	M5	60215 00 012
4	1/8	60210 00 001
4	1/4	60215 00 002
6	M5	60215 00 003
6	1/8	60215 00 004
8	1/8	60215 00 005
8	1/4	60215 00 006
10	1/4	60215 00 007
10	3/8	60215 00 008
10	1/2	60215 00 009
12	3/8	60215 00 010
12	1/2	60215 00 011

60210



Stainless Steel - **Orienting Tee Male Adapter** (Taper) Centre Leg

ØD	C	P/N
4	1/8	60210 00 001
4	1/4	60210 00 002
6	1/8	60210 00 003
6	1/4	60210 00 004
8	1/8	60210 00 005
8	1/4	60210 00 006
10	1/4	60210 00 007
10	3/8	60210 00 008
10	1/2	60210 00 009
12	3/8	60210 00 010
12	1/2	60210 00 011

3806



Stainless Steel - **Equal Straight Connector**

ØD	P/N
4	3806 04 00
6	3806 06 00
8	3806 08 00
10	3806 10 00
12	3806 12 00

60040



Stainless Steel - **Straight Connector**

ØD	P/N
4	60040 00 001
6	60040 00 002
8	60040 00 003
10	60040 00 004
12	60040 00 005

60050



Stainless Steel - **Bulkhead Connector**

ØD	C	P/N
4	M12	60050 00 001
6	M14	60050 00 002
8	M16	60050 00 003
10	M20	60050 00 004
12	M22	60050 00 005

3816



Stainless Steel - **Equal Bulkhead Connector**

ØD	P/N
4	3816 04 00
6	3816 06 00
8	3816 08 00
10	3816 10 00
12	3816 12 00

3821



Stainless Steel - **Male Stud Standpipe**, BSPT Thread

ØD	C	P/N
4	R1/8	3805 04 10
6	R1/8	3805 06 10
6	R1/4	3805 06 13
8	R1/8	3805 08 10
8	R1/4	3805 08 13
10	R1/4	3805 10 13
10	R3/8	3805 10 17
12	R1/4	3805 12 13
12	R3/8	3805 12 17
12	R1/2	3805 12 21

3866



Stainless Steel - **Push-In Reducer**

ØD	C	P/N
4	6	3866 04 06
4	8	3866 04 08
6	8	3866 06 08
6	10	3866 06 10
8	10	3866 08 10
8	12	3866 08 12
10	12	3866 10 12

Push-On Fittings - Nickel-Plated Brass & Stainless Steel

1000
Straight Male Adaptor (Taper),
 Nickel-Plated Brass


ØD	C	P/N
4/2.7	1/8	01000 00 001
5/3	1/8	01000 00 002
6/4	1/8	01000 00 003
6/4	1/4	01000 00 004
6/4	3/8	01000 00 005
8/6	1/8	01000 00 006
8/6	1/4	01000 00 007
8/6	3/8	01000 00 008
8/6	1/2	01000 00 009
10/8	1/8	01000 00 010
10/8	1/4	01000 00 011
10/8	3/8	01000 00 012
10/8	1/2	01000 00 013
12/10	3/8	01000 00 014
12/10	1/2	01000 00 015
15/12.5	1/2	01000 00 016


1020
Straight Male Adaptor (Parallel),
 Nickel-Plated Brass


ØD	C	P/N
4/2.7	1/8	01020 00 001
5/3	1/8	01020 00 002
6/4	1/8	01020 00 003
6/4	1/4	01020 00 004
6/4	3/8	01020 00 005
6/4	1/2	01020 00 006
8/6	1/8	01020 00 007
8/6	1/4	01020 00 008
8/6	3/8	01020 00 009
8/6	1/2	01020 00 010
10/8	1/8	01020 00 011
10/8	1/4	01020 00 012
10/8	3/8	01020 00 013
10/8	1/2	01020 00 014
12/10	3/8	01020 00 015
12/10	1/2	01020 00 016
15/12.5	1/2	01020 00 017


1040
Straight Connector, Nickel-Plated
 Brass


ØD	C	P/N
4/2.7		01040 00 001
5/3		01040 00 002
6/4	5/3	01040 00 003
6/4		01040 00 004
8/6	6/4	01040 00 005
8/6		01040 00 006
10/8	6/4	01040 00 007
10/8	8/6	01040 00 008
10/8		01040 00 009
12/10		01040 00 010
15/12.5		01040 00 011


1100
Elbow Male Adaptor (Taper),
 Nickel-Plated Brass


ØD	C	P/N
4/2.7	1/8	01100 00 001
5/3	1/8	01100 00 002
6/4	1/8	01100 00 003
6/4	1/4	01100 00 004
6/4	3/8	01100 00 005
8/6	1/8	01100 00 006
8/6	1/4	01100 00 007
8/6	3/8	01100 00 008
8/6	1/2	01100 00 009
10/8	1/8	01100 00 010
10/8	1/4	01100 00 011
10/8	3/8	01100 00 012
10/8	1/2	01100 00 013
12/10	3/8	01100 00 014
12/10	1/2	01100 00 015
15/12.5	1/2	01100 00 016


1050
Bulkhead Connector, Nickel-
 Plated Brass


ØD	C	P/N
4/2.7	M6x0.5	01040 00 001
5/3	M7x0.75	01040 00 002
6/4x5/3	M10x1	01040 00 003
6/4	M10x1	01040 00 004
8/6x6/4	M10x12	01040 00 005
8/6	M10x12	01040 00 006
10/8x6/4	M14x1	01040 00 007
10/8x8/6	M14x1	01040 00 008
10/8	M14x1	01040 00 009
12/10	M16x1	01040 00 010
15/12.5	M20x1	01040 00 011


1110
Orienting Elbow Male Adaptor
 (Taper), Nickel-Plated Brass


ØD	C	P/N
4/2.7	1/8	01110 00 006
6/4	1/8	01110 00 001
6/4	1/4	01110 00 002
8/6	1/8	01110 00 003
8/6	1/4	01110 00 004
10/8	1/4	01110 00 005


1200
Tee Male Adaptor (Taper) Centre
 Leg, Nickel-Plated Brass


ØD	C	P/N
4/2.7	1/8	01200 00 001
5/3	1/8	01200 00 002
6/4	1/8	01200 00 003
6/4	1/4	01200 00 004
8/6	1/8	01200 00 005
8/6	1/4	01200 00 006
10/8	1/8	01200 00 007
10/8	1/4	01200 00 008
10/8	3/8	01200 00 009
12/10	3/8	01200 00 010
15/12.5	1/2	01200 00 011


1230
Tee Connector, Nickel-Plated
 Brass


ØD	C	P/N
4/2.7		01200 00 001
5/3		01200 00 002
6/4		01200 00 003
8/6	5/3	01200 00 004
8/6		01200 00 005
10/8	6/4	01200 00 006
10/8	8/6	01200 00 007
10/8		01200 00 008
12/10		01200 00 009
15/12.5		01200 00 010


61005
Straight Male Adaptor Universal
 Short, Stainless Steel


ØD	C	P/N
6/4	1/8	61005 00 003
6/4	1/4	61005 00 004
8/6	1/8	61005 00 006
8/6	1/4	61005 00 007
10/8	1/4	61005 00 011
10/8	3/8	61005 00 012


61040
Straight Connector, Stainless
 Steel


ØD	P/N
6/4	61040 00 004
8/6	61040 00 006
10/8	61040 00 009


61200
Tee Male Adaptor (Taper) Centre
 Leg, Stainless Steel


ØD	C	P/N
6/4	1/8	61200 00 003
6/4	1/4	61200 00 004
8/6	1/8	61200 00 005
8/6	1/4	61200 00 006
10/8	1/4	61200 00 008
10/8	3/8	61200 00 009


61100
Elbow Male Adaptor (Taper),
 Stainless Steel


ØD	C	P/N
6/4	1/8	61100 00 003
6/4	1/4	61100 00 004
8/6	1/8	61100 00 006
8/6	1/4	61100 00 007
10/8	1/4	61100 00 011
10/8	3/8	61100 00 012


61130
Elbow Connector, Stainless Steel


ØD	P/N
6/4	61130 00 003
8/6	61130 00 005
10/8	61130 00 006


61050
Bulkhead Connector, Stainless
 Steel


ØD	C	P/N
6/4	M10x1	61050 00 004
8/6	M12x1	61050 00 006


61230
Tee Connector, Stainless Steel


ØD	P/N
6/4	61230 00 003
8/6	61230 00 005
10/8	61230 00 008


61700
Nut, Stainless Steel


ØD	C	P/N
6/4	M10x1	61700 00 44 0X 00
8/6	M12x1	61700 00 44 4X 00
10/8	M14x1	61700 00 44 5X 00



Threaded Fittings & Adaptors

0900

Straight Male Equal/Unequal Adaptor, Nickel-Plated Brass

ØD	C	P/N
R1/8	R1/8	0900 00 10
R1/4	R1/4	0900 00 13
R3/8	R3/8	0900 00 17
R1/2	R1/2	0900 00 21
R3/4	R3/4	0900 00 27
R1	R1	0900 00 34
R1/8	R1/4	0900 10 13
R1/8	R3/8	0900 10 17
R1/4	R3/8	0900 13 17
R1/4	R1/2	0900 13 21
R3/8	R1/2	0900 17 21
R1/2	R3/4	0900 21 27
R3/4	R1	0900 27 34

M5X0,8 M5X0,8 *0901 00 19

M5X0,8 G1/8 *0901 19 10

0931

Tailpiece Adaptor For Rubber Hose, Male BSPP & M5 Thread,, Nickel-Plated Brass

ØD	C	P/N
6	G1/8	0931 06 10
6	G1/4	0931 06 13
7	G1/8	0931 07 10
7	G1/4	0931 07 13
7	G3/8	0931 07 17
8	G1/8	0931 08 10
8	G1/4	0931 08 13
8	G3/8	0931 08 17
10	G1/4	0931 10 13
10	G3/8	0931 10 17
10	G1/2	0931 10 21
15	G3/8	0931 15 17
15	G1/2	0931 15 21
18	G1/2	0931 18 21

0902

Straight Female, BSPP & M5 Equal/Unequal Adaptor, Nickel-Plated Brass

ØD	C	P/N
M5x0,8	M5x0,8	0902 00 19
G1/8	G1/8	0902 00 10
G1/4	G1/4	0902 00 13
G3/8	G3/8	0902 00 17
G1/2	G1/2	0902 00 21
G3/4	G3/4	0902 00 27
G1/8	G1/4	0902 10 13
G1/8	G3/8	0902 10 17
G1/4	G3/8	0902 13 17
G1/4	G1/2	0902 13 21
G3/8	G1/2	0902 17 21
M5x0,8	G1/8	0902 19 10
G1/2	G3/4	0902 21 27

0904

Reducer Male BSP Taper-To-Female BSP Parallel, Nickel-Plated Brass

ØD	C	P/N
R1/4	G1/8	0904 10 13
R3/8	G1/8	0904 10 17
R3/8	G1/4	0904 13 17
R1/2	G1/4	0904 13 21
R1/2	G3/8	0904 17 21
R3/4	G3/8	0904 17 27
R3/4	G1/2	0904 21 27

0905

Reducer Male To Female, BSPP & M5 Thread, Nickel-Plated Brass

ØD	P/N
R1/8	0905 00 10
R1/4	0905 00 13
R3/8	0905 00 17
R1/2	0905 00 21

0903

Reducer Male To Female BSPP, Nickel-Plated Brass

ØD	C	P/N
1/4	1/8	02095 00 01 5W 00
3/8	1/4	02095 00 01 AA 00
1/2	3/8	02095 00 01 AF 00
3/4	1/2	02095 00 01 AM 00
1	3/4	02095 00 01 AQ 00

0907

Equal Extended Adaptor M/F, BSPP Thread, Nickel-Plated Brass

ØD	P/N
G1/8	0907 00 10
G1/8	0907 00 10 01
G1/4	0907 00 13
G1/4	0907 00 13 01

0912

Equal Female Stud Elbow, BSPP & M5 Thread, Nickel-Plated Brass

ØD	P/N
M5x0,8	0912 00 19
G1/8	0912 00 10
G1/4	0912 00 13
G3/8	0912 00 17
G1/2	0912 00 21
G3/4	0912 00 27

0913

Equal Female Stud Elbow BSPP, Male BSPT & M5 Thread, Nickel-Plated Brass

ØD1	ØD2	P/N
G1/8	R1/8	0913 00 10
G1/4	R1/4	0913 00 13
G3/8	R3/8	0913 00 17
G1/2	R1/2	0913 00 21
G3/4	R3/4	0913 00 27

0914

Equal Male Stud Elbow, BSPP & M5 Thread, Nickel-Plated Brass

ØD	P/N
R1/8	0914 00 10
R1/4	0914 00 13
R3/8	0914 00 17
R1/2	0914 00 21
R3/4	0914 00 27

0915

Equal Female Tee, BSPP & M5 Thread, Nickel-Plated Brass

ØD	P/N
M5x0,8	0915 00 19
G1/8	0915 00 10
G1/4	0915 00 13
G3/8	0915 00 17
G1/2	0915 00 21
G3/4	0915 00 27

0927

Equal Male Tee, BSPT Thread, Nickel-Plated Brass

ØD	P/N
R1/8	0927 00 10
R1/4	0927 00 13
R3/8	0927 00 17
R1/2	0927 00 21
R3/4	0927 00 27

0928

Female Stud Branch Tee, Male BSPT, Female BSPP, Nickel-Plated Brass

ØD	P/N
R1/8	0928 00 10
R1/4	0928 00 13
R3/8	0928 00 17
R1/2	0928 00 21
R3/4	0928 00 27

0916

Male Stud Branch Tee, Female BSPP, Male BSPT, Nickel-Plated Brass

ØD	C	P/N
G1/8	R1/8	0912 00 10
G1/4	R1/4	0912 00 13
G3/8	R3/8	0912 00 17
G1/2	R1/2	0912 00 21
G3/4	R3/4	0912 00 27

0917

Off-Set Male Tee, Nickel-Plated Brass

ØD	P/N
R1/8	0917 00 10
R1/4	0917 00 13
R3/8	0917 00 17
R1/2	0917 00 21
R3/4	0917 00 27

0910

Equal Y Female, BSPP Thread, Nickel-Plated Brass

ØD	P/N
G1/8	0910 00 10
G1/4	0910 00 13
G3/8	0910 00 17
G1/2	0910 00 21

0911

Y Female BSPP, Male BSPP, Nickel-Plated Brass

ØD	P/N
R1/8	0911 00 10
R1/4	0911 00 13
R3/8	0911 00 17
R1/2	0911 00 21

0908

Equal Female Cross, BSPP
Thread, Nickel-Plated Brass



ØD	P/N
R1/8	0908 00 10
R1/4	0908 00 13
R3/8	0908 00 17
R1/2	0908 00 21
R3/4	0908 00 27

03060

Bulkhead Connector, Nickel-Plated Brass



ØD	P/N
M5	03060 00 001
1/8	03060 00 002
1/4	03060 00 003
3/8	03060 00 004
1/2	03060 00 005
3/4	03060 00 011

0920

Female Bulkhead Connector,
BSPP & M5, Nickel-Plated Brass



C1	C2	P/N
M5x0,8	M10x1	0920 00 19
G1/8	M16x1,5	0920 00 10
G1/4	M20x1,5	0920 00 13
G3/8	M26x1,5	0920 00 17
G1/2	M28x1,5	0920 00 21

02060

'Mac Union' Taper Nipple
(3 Pieces), Brass



ØD	P/N
1/8	02060 00 001
1/4	02060 00 002
3/8	02060 00 003
1/2	02060 00 004
3/4	02060 00 005
1	02060 00 006

03015 & TZ

Male Plug (Parallel), O-Ring,
Nickel-Plated Brass



ØD	P/N
M5	03015 00 005
1/8	03015 00 001
1/4	03015 00 002
3/8	03015 00 003
1/2	03015 00 004

03025

Male Plug (Taper), Nickel-Plated Brass



ØD	P/N
1/8	03025 00 02 NB
1/4	03025 00 03 NB
3/8	03025 00 04 NB
1/2	03025 00 05 NB

82242

Adapter Female, NPTF, Male G
Thread, Nickel-Plated Brass



ØG	NPTF	P/N
1/8	1/8	82242 00 01 2WNB
1/4	1/4	82242 00 01 6WNB
3/8	3/8	82242 00 01 AB NB
1/2	1/2	82242 00 01 AG NB

01704

Nut, Nickel-Plated Brass



ØD	P/N
M10x1	01704 00 01 C8 NB
M16x1.5	01704 00 01 E3 NB
M20x1.5	01704 00 01 F2 NB
M26x1.5	01704 00 01 0V NB
M28x1.5	01704 00 01 H1 NB
M33x1.5	01704 00 01 22 NB

06047

Distribution Manifold, Treated Aluminium



ØA	ØB	ØC°	P/N
1/4	1/8	2	06047 00 11 AJ AG
1/4	1/8	3	06047 00 11 AK AG
1/4	1/8	4	06047 00 11 AW AG
1/4	1/8	5	06047 00 11 BA AG
1/4	1/8	6	06047 00 11 BB AG
3/8	1/4	2	06047 00 11 BC AG
3/8	1/4	3	06047 00 11 BD AG
3/8	1/4	4	06047 00 11 BE AG
3/8	1/4	5	06047 00 11 BF AG
3/8	1/4	6	06047 00 11 BG AG
1/2	3/8	2	06047 00 11 ES AG
1/2	3/8	3	06047 00 11 ET AG
1/2	3/8	4	06047 00 11 EU AG
1/2	3/8	5	06047 00 11 EV AG
1/2	3/8	6	06047 00 11 EZ AG

06048

Double Distribution Manifold,
Treated Aluminium



ØA	ØB	ØC°	P/N
1/4	1/8	2	06048 00 11 AJ AG
1/4	1/8	3	06048 00 11 AK AG
1/4	1/8	4	06048 00 11 AW AG
1/4	1/8	5	06048 00 11 BA AG
1/4	1/8	6	06048 00 11 BB AG
3/8	1/4	2	06048 00 11 BC AG
3/8	1/4	3	06048 00 11 BD AG
3/8	1/4	4	06048 00 11 BE AG
3/8	1/4	5	06048 00 11 BF AG
3/8	1/4	6	06048 00 11 BG AG
1/2	3/8	2	06048 00 11 ES AG
1/2	3/8	3	06048 00 11 ET AG
1/2	3/8	4	06048 00 11 EU AG
1/2	3/8	5	06048 00 11 EV AG
1/2	3/8	6	06048 00 11 EZ AG

3311

Female Manifold, BSP Parallel &
Metric, Treated Aluminium



Ports	ØD1	ØD2	P/N
2	G1/4	G1/8	3311 10 13 02
3	G1/4	G1/8	3311 10 13 03
4	G1/4	G1/8	3311 10 13 04
5	G1/4	G1/8	3311 10 13 05
6	G1/4	G1/8	3311 10 13 06
2	G3/8	G1/4	3311 13 17 02
3	G3/8	G1/4	3311 13 17 03
4	G3/8	G1/4	3311 13 17 04
5	G3/8	G1/4	3311 13 17 05
6	G3/8	G1/4	3311 13 17 06
7	G1/8	M5x0,8	3311 19 10 07

3312

Female Cross Manifold, BSP
Parallel & Metric, Treated
Aluminium



ØD	P/N
G1/8	3312 00 10
G1/4	3312 00 13
G3/8	3312 00 17
M5x0,8	3312 00 19
G1/2	3312 00 21

3310

Manifold, With Push-In Con-
nection, Treated Aluminium/Polymer



ØD	C	P/N
4	G1/4	3310 04 13
6	G1/4	3310 06 13
8	G3/8	3310 08 17

Function Fittings - Flow Control Regulators

7010

Flow Control Regulator - With Recessed Adjustment Screw, BSPP & M5 Thread

ØD	C	P/N
4	M5x0,8	7010 04 19
4	G1/8	7010 04 10
6	M5x0,8	7010 06 19
6	G1/8	7010 06 10
6	G1/4	7010 06 13
8	G1/8	7010 08 10
8	G1/4	7010 08 13
8	G3/8	7010 08 17
10	G1/4	7010 10 13
10	G3/8	7010 10 17
10	G1/2	7010 10 21
12	G3/8	7010 12 17
12	G1/2	7010 12 21



7660

Flow Control Regulator - Miniature BSPP & Metric Thread

ØD	C	P/N
4	M5x0,8	7660 04 19
4	G1/8	7660 04 10
6	M5x0,8	7660 06 19
6	G1/8	7660 06 10
6	G1/4	7660 06 13
8	G1/8	7660 08 10
8	G1/4	7660 08 13



7040

Flow Control Regulator - Compact, Swivel Outlet Type, BSPP Thread

ØD	C	P/N
6	G1/8	7060 06 10
6	G1/4	7060 06 13
8	G1/8	7060 08 10
8	G1/4	7060 08 13
8	G3/8	7060 08 17
10	G1/4	7060 10 13
10	G3/8	7060 10 17
12	G3/8	7060 12 17
12	G1/2	7060 12 21



7060

Flow Control Regulator - Compact, BSPP Thread

ØD	C	P/N
4	G1/8	7060 04 10
6	G1/8	7060 06 10
6	G1/4	7060 06 13
8	G1/8	7060 08 10
8	G1/4	7060 08 13
8	G3/8	7060 08 17
10	G1/4	7060 10 13
10	G3/8	7060 10 17
12	G3/8	7060 12 17
12	G1/2	7060 12 21



7669

Flow Control Regulator - Miniature, BSPP & Metric Thread

ØD	C	P/N
4	M5x0,8	7669 04 19
4	G1/8	7669 04 10
6	M5x0,8	7669 06 19
6	G1/8	7669 06 10
6	G1/4	7669 06 13
8	G1/8	7669 08 10
8	G1/4	7669 08 13



7776

Flow Control Regulator - In-Line With Push-In Connections, Panel Mountable

ØD	P/N
4	7776 04 00
6	7776 06 00
8	7776 08 00
10	7776 10 00
12	7776 12 00



7770

Flow Control Regulator - In-Line With Push-In Connection

ØD	P/N
4	7770 04 00
6	7770 06 00
8	7770 08 00
10	7770 10 00
12	7770 12 00



7100

Flow Control Regulator - Metal Type - Compact Push-In Connection, BSPP Thread

ØD	C	P/N
4	G1/8	7100 04 10
6	G1/8	7100 06 10
6	G1/4	7100 06 13
8	G1/8	7100 08 10
8	G1/4	7100 08 13
8	G3/8	7100 08 17
10	G1/4	7100 10 13
10	G3/8	7100 10 17
12	G3/8	7100 12 17
12	G1/2	7100 12 21
14	G1/2	7100 14 21



7110

Flow Control Regulator - Metal Type - Compact With Threaded Fitting, BSPP Thread

C	P/N
G1/8	7110 10 10
G1/4	7110 13 13
G3/8	7110 17 17
G1/2	7110 21 21



7130

Flow Control Regulator - Metal Type - With Push-In Connection, BSPP Recessed Adjustment Screw

ØD	C	P/N
4	M5x0,8	7130 04 19
4	G1/8	7130 04 10
6	M5x0,8	7130 06 19
6	G1/8	7130 06 10
6	G1/4	7130 06 13
8	G1/8	7130 08 10
8	G1/4	7130 08 13
8	G3/8	7130 08 17



7762

Flow Control Regulator - Metal Type - With Brass Compression fitting & Ext. Adjustment Screw, BSPP Thread

ØD	C	P/N
8	G1/8	*7762 08 10
10	G1/4	7762 10 13
14	G3/8	7762 14 17
18	G1/2	7762 18 21



*7762 08 10 - Comes with Adjustment Knurl

7810

Flow Control Regulator - Stainless Steel With Threaded Fitting, BSPP & Metric, Recessed Adjustment Screw

C1 - C2	P/N
G1/8	7810 10 10
G1/4	7810 13 13
G3/8	7810 17 17
G1/2	7810 21 21



7812

Flow Control Regulator - Stainless Steel With Threaded Fitting, BSPP & Metric, Recessed Adjustment Screw

C1 - C2	P/N
G1/8	7812 10 10
G1/4	7812 13 13
G3/8	7812 17 17
G1/2	7812 21 21



08850

Flow Control Regulator - Uni-Directional

ØD	P/N
M5	08850 00 001
1/8	08850 00 002
1/4	08850 00 003
3/8	08850 00 004
1/2	08850 00 005



08860

Flow Control Regulator - Bi-Directional

ØD	P/N
M5	08860 00 001
1/8	08860 00 002
1/4	08860 00 003
3/8	08860 00 004
1/2	08860 00 005



900

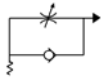
Flow Control Regulator - Anodised Aluminium, One-Way

ØD	P/N
1/8	901
1/4	902
1/2	904



57901

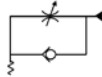
Flow Control Regulator -
Orienting For Cylinders -
Universal Short



ØD	C	P/N
4	M5	57901 00 002
4	1/8	57901 00 003
5	M5	57901 00 004
5	1/8	57901 00 005
5	1/4	57901 00 006
6	M5	57901 00 007
6	1/8	57901 00 008
6	1/4	57901 00 009
8	1/8	57901 00 010
8	1/4	57901 00 011
8	3/8	57901 00 016
10	1/4	57901 00 017
10	3/8	57901 00 012
12	3/8	57901 00 013
12	1/2	57901 00 014
14	1/2	57901 00 015

57910

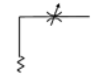
Flow Control Regulator -
Orienting For Valves - Universal
Short



ØD	C	P/N
4	M5	57910 00 002
4	1/8	57910 00 003
5	M5	57910 00 004
5	1/8	57910 00 005
5	1/4	57910 00 006
6	M5	57910 00 007
6	1/8	57910 00 008
6	1/4	57910 00 009
8	1/8	57910 00 010
8	1/4	57910 00 011
8	3/8	57910 00 016
10	1/4	57910 00 017
10	3/8	57910 00 012
12	3/8	57910 00 013
12	1/2	57910 00 014
14	1/2	57910 00 015

57920

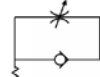
Flow Control Regulator -
Orienting Bi-Directional -
Universal Short



ØD	C	P/N
4	M5	57920 00 002
4	1/8	57920 00 003
5	M5	57920 00 004
5	1/8	57920 00 005
5	1/4	57920 00 006
6	M5	57920 00 007
6	1/8	57920 00 008
6	1/4	57920 00 009
8	1/8	57920 00 010
8	1/4	57920 00 011
8	3/8	57920 00 016
10	1/4	57920 00 017
10	3/8	57920 00 012
12	3/8	57920 00 013
12	1/2	57920 00 014
14	1/2	57920 00 015

57905

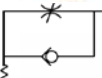
Flow Control Regulator -
Orienting For Cylinders -
Universal Short



ØD	C	P/N
4	M5	57905 00 002
4	1/8	57905 00 003
5	M5	57905 00 004
5	1/8	57905 00 005
5	1/4	57905 00 006
6	M5	57905 00 007
6	1/8	57905 00 008
6	1/4	57905 00 009
8	1/8	57905 00 010
8	1/4	57905 00 011
8	3/8	57905 00 016
10	1/4	57905 00 017
10	3/8	57905 00 012
12	3/8	57905 00 013
12	1/2	57905 00 014
14	1/2	57905 00 015

57915

Flow Control Regulator -
Orienting For Valves - Universal
Short



ØD	C	P/N
4	M5	57915 00 002
4	1/8	57915 00 003
5	M5	57915 00 004
5	1/8	57915 00 005
5	1/4	57915 00 006
6	M5	57915 00 007
6	1/8	57915 00 008
6	1/4	57915 00 009
8	1/8	57915 00 010
8	1/4	57915 00 011
8	3/8	57915 00 016
10	1/4	57915 00 017
10	3/8	57915 00 012
12	3/8	57915 00 013
12	1/2	57915 00 014
14	1/2	57915 00 015

57925

Flow Control Regulator -
Orienting Bi-Directional -
Universal Short



ØD	C	P/N
4	M5	57925 00 002
4	1/8	57925 00 003
5	M5	57925 00 004
5	1/8	57925 00 005
5	1/4	57925 00 006
6	M5	57925 00 007
6	1/8	57925 00 008
6	1/4	57925 00 009
8	1/8	57925 00 010
8	1/4	57925 00 011
8	3/8	57925 00 016
10	1/4	57925 00 017
10	3/8	57925 00 012
12	3/8	57925 00 013
12	1/2	57925 00 014
14	1/2	57925 00 015

08870

Logic Element - In-Line, 'OR' Type



ØD	P/N
1/8	TV18
1/4	08870 00 001

08872

Logic Element - In-Line 'AND' Type



ØD	P/N
1/8	08872 00 001

Function Fittings - Axial Valves

4202 / VIP

Nickel-Plated Brass

Legris & OMAL Axial Valve - Normally Open OR Normally Closed,
Double Female, BSPP, NBR/FKM/EPDM Seals, Sizes "3/8 to 2"

ØD	P/N
G3/8	4202 10 17 20
G1/2	4202 15 21 20
G3/4	4202 20 27 20
G1	4202 25 34 20
G1 1/4	4202 32 42 20
G1 1/2	4202 40 49 20
G2	4202 50 48 20



Function Fittings - Pneumatic Actuator

DAN

Aluminium Alloy/Stainless Steel

OMAL Double Acting ('DAN') Pneumatic Actuator, FKM/NBR Seals,
Torque 8Nm to 8000Nm, Rotation Angle 90°,
Temp.: from 0°C to +80°C
(from -20°C with dry air only.)

Air supply: 5,6 bar; max. 8,4 bar.
Operating media: compressed
filtered air, not necessarily
lubricated. In case of lubricated
air, either non detergent oil or
NBR compatible oil must be used.



* Please ask for further information

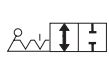
Function Fittings - Ball Valves

7913

Mini Ball Valve - 3/2 With Vent & Push-In Connection, Polymer


ØD	P/N
4	7913 04 00
6	7913 06 00
8	7913 08 00
10	7913 10 00
12	7913 12 00

7910

Mini Ball Valve - 2/2 With Push-In Connection, Polymer


ØD	P/N
4	7910 04 00
6	7910 06 00
8	7910 08 00
10	7910 10 00
12	7910 12 00

4905

"Economy" Female To Female
With Standard Handle, BSP
Parallel, Nickel-Plated Brass


C	DN	PN	P/N
G1/4	10	25	4905 00 13
G3/8	10	25	4905 00 17
G1/2	14	25	4905 00 21
G3/4	20	25	4905 00 27
G1	25	25	4905 00 34
G1 1/4	32	16	4905 00 42
G1 1/2	40	16	4905 00 49
G2	50	16	4905 00 48

L100

2-Way Full Bore, Female To Female, Suitable for Low Pressures, Nickel-Plated Brass


ØD	P/N
3/8	DN 10
1/2	DN 15
3/4	DN 20
1	DN 25
1 1/4	DN 32
1 1/2	DN 40
2	DN 50

06410

Parallel Male GA ISO 228 To Female G ISO 228 Valve, Nickel-Plated Brass


ØD	C	P/N
1/8	1/8	06410 00 001
1/4	1/8	06410 00 002
1/4	1/4	06410 00 003
3/8	3/8	06410 00 004
1/2	1/2	06410 00 005
3/4	3/4	06410 00 066

06320

Parallel Male GA ISO 228 To Female RP ISO 7 Valve, Nickel-Plated Brass


ØD	C	P/N
1/8	1/8	06320 00 001
1/4	1/8	06320 00 002
1/4	1/4	06320 00 003
3/8	3/8	06320 00 004
1/2	1/2	06320 00 005
3/4	3/4	06320 00 066

06710

3-Way Valve 'T' Female G ISO 228, Nickel-Plated Brass


ØD	ØD	ØD	P/N
1/8	1/8	1/8	06710 00 001
1/4	1/4	1/4	06710 00 002
3/8	3/8	3/8	06710 00 003

06560

Push-In Connection, Nickel-Plated Brass


ØD	C	P/N
4	4	06560 00 001
6	6	06560 00 002
8	8	06560 00 003
10	10	06560 00 075
12	12	06560 00 076

06720

'L' Female G ISO 228 Valve, Nickel-Plated Brass


ØD	ØD	P/N
1/8	1/8	06720 00 001
1/4	1/4	06720 00 002
3/8	3/8	06720 00 003

06755L

Lockable With Exhaust Vent, Nickel-Plated Brass


ØD	P/N
3/8	06755 L0 001
1/2	06755 L0 002
3/4	06755 L0 003
1	06755 L0 004
1 1/4	06755 L0 005
1 1/2	06755 L0 006
2	06755 L0 007

0439

Lockable, Female To Female With Vent, Nickel-Plated Brass


C	DN	P/N
G1/4	7	0439 07 13
G3/8	10	0439 10 17
G1/2	13	0439 13 21

06065

Mini Ball Valve - Female ISO228 To Female ISO228, Nickel-Plated Brass


ØD	P/N
1/8	06065 00 001
1/4	06065 00 002
3/8	06065 00 003
1/2	06065 00 004
3/4	06065 00 005

06300

Female RP ISO 7 To Female RP ISO 7 Valve, Nickel-Plated Brass


ØD	C	P/N
1/8	1/8	06300 00 001
1/4	1/4	06300 00 002
3/8	3/8	06300 00 003
1/2	1/2	06300 00 004
3/4	3/4	06300 00 055

06066

Mini Ball Valve - Male ISO228 To Female ISO228, Nickel-Plated Brass


ØD	P/N
1/8	06066 00 001
1/4	06066 00 002
3/8	06066 00 003
1/2	06066 00 004
3/4	06066 00 005

06310

Taper Male R ISO 7 To Female RP ISO 7 Valve, Nickel-Plated Brass


ØD	C	P/N
1/8	1/8	06310 00 001
1/4	1/8	06310 00 002
1/4	1/4	06310 00 003
3/8	3/8	06310 00 004
1/2	1/2	06310 00 005
3/4	3/4	06310 00 066

06330

Taper Male R ISO 7 To Parallel Male GA ISO 228 Valve, Nickel-Plated Brass


ØD	C	P/N
1/8	1/8	06320 00 001
1/4	1/8	06320 00 002
1/4	1/4	06320 00 003
3/8	3/8	06320 00 004
1/2	1/2	06320 00 005
3/4	3/4	06320 00 066

06400

Female G ISO 228 To Female G ISO 228 Valve, Nickel-Plated Brass


ØD	C	P/N
1/8	1/8	06400 00 001
1/4	1/4	06400 00 002
3/8	3/8	06400 00 003
1/2	1/2	06400 00 004
3/4	3/4	06400 00 055

06600

Exhaust Hole Female G ISO 228 To Female G ISO 228 Valve, Nickel-Plated Brass


ØD	C	P/N
1/8	1/8	06600 00 001
1/4	1/4	06600 00 002
3/8	3/8	06600 00 003

06700

3-Way Valve 'L' Female G ISO 228, Nickel-Plated Brass


ØD	ØD	ØD	P/N
1/8	1/8	1/8	06700 00 001
1/4	1/4	1/4	06700 00 002
3/8	3/8	3/8	06700 00 003

06920

Plastic - Coloured Plate For Handles


Type	P/N
A	06920 A0 30 00 RO
B	06920 B0 30 00 RO
A	06920 A0 30 00 GI
B	06920 B0 30 00 GI
A	06920 A0 30 00 BL
B	06920 B0 30 00 BL
A	06920 A0 30 00 VE
B	06920 B0 30 00 VE
A	06920 A0 30 00 VE
B	06920 B0 30 00 VE

06910

Plastic - Long Handle


Type	Size	P/N
A	1/8, 1/4, 3/8	06910 A0 30 00 00
B	1/2, 3/4	06910 B0 30 00 00

06915

Spindle Extension With Long Handle & Screw


Type	Size	P/N
A	1/8, 1/4, 3/8	06915 00 001
B	1/2, 3/4	06915 00 002

L424



Stainless Steel - **2-Way Full-Bore**
3 Piece Casted Threaded-Ends
Or Butt Weld, PTFE Seals

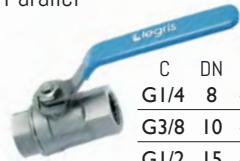


ØD	P/N
1/4	DN 08
3/8	DN 10
1/2	DN 15
3/4	DN 20
1	DN 25
1 1/4	DN 32
1 1/2	DN 40
2	DN 50
2 1/2	DN 65
3	DN 80
4	DN 100

4810



Stainless Steel - **"Economy"**
Version, Female To Female, BSP
Parallel



C	DN	P/N
G1/4	8	4810 08 13
G3/8	10	4810 10 17
G1/2	15	4810 15 21
G3/4	20	4810 20 27
G1	25	4810 25 34

LHA



High Ciclicity Ball Valves

Range of 4: Carbon Steel, Carbon Steel (Manual Operated),
Stainless Steel, & Stainless Steel PTFE-TFM1600 seats

Fluid range: Different fluids,
liquid and gaseous, compatible with
constituent materials.

Antistatic, & FireSafe Design

* Please contact us for sizes & part numbers



Function Fittings - Silencers

0670



Threaded Silencer - Nickel-Plated
Brass/Sintered Bronze, Threaded
BSP Parallel



ØD	P/N
G1/8	0670 00 10
G1/4	0670 00 13
G3/8	0670 00 17
G1/2	0670 00 21
G3/4	0670 00 27
G1	0670 00 34

0671



Push-In Silencer - Nickel-Plated
Brass/Sintered Bronze



ØD	P/N
4	0671 04 00
6	0671 06 00
8	0671 08 00
10	0671 10 00
12	0671 12 00

0672



Flow Control Silencer - Nickel-
Plated Brass/Sintered Bronze,
Male BSP Parallel



ØD	P/N
G1/8	0672 00 10
G1/4	0672 00 13
G3/8	0672 00 17
G1/2	0672 00 21

07050



Flow Control Silencer - Brass
Sintered Bronze



ØD	P/N
1/8	07050 00 001
1/4	07050 00 002
3/8	07050 00 003
1/2	07050 00 004

0673



Compact Silencer - Brass/
Sintered Bronze, Threaded BSP
Parallel, Metric & UNF



ØD	P/N
G1/8	0673 00 10
G1/4	0673 00 13
G3/8	0673 00 17
M5x0,8	0673 00 19
10-32	0673 00 20
G1/2	0673 00 21

07070



Threaded Silencer - Acetel Resin
& Plastic Soundproofing Material



ØD	P/N
1/8	07070 00 001
1/4	07070 00 002
3/8	07070 00 003
1/2	07070 00 004
3/4	07070 00 005
1	07070 00 006

MSR



Plastic Silencer - Operating
Pressure Range: 0 to 0.9MPa
Ambient Temp.: 0 to +60C



ØD	P/N
1/8	MSR01-S
1/8	MSR01-B
1/4	MSR02-S
1/4	MSR02-B

0674



Threaded Silencer - Male BSP
Parallel & Metric



ØD	P/N
G1/8	0674 00 10
G1/4	0674 00 13
G3/8	0674 00 17
M5x0,8	0674 00 19
G1/2	0674 00 21
G3/4	0674 00 27
G1	0674 00 34

0676



Flow Control Silencer - Male BSP
Parallel



ØD	P/N
G1/8	0676 00 10
G1/4	0676 00 13
G3/8	0676 00 17
M5x0,8	0676 00 19
G1/2	0676 00 21

B##



'Bantam' Muffler - Zinc-Plated
Steel & Brass Acoustic Element
* Male Option Available In Stainless



ØD	P/N	ØD	P/N
1/8	*B18	1	*B88
1/4	*B28	1 1/4	B108
3/8	*B38	1 1/2	B128
1/2	*B48	2	B168
3/4	*B68		

B##



'Bantam' Muffler - Zinc-Plated
Steel & Brass Acoustic Element,
Female Options: 1/8" to 1/2"



ØD	P/N
1/8	B18
1/4	B28
3/8	B38
1/2	B48

Function Fittings - Various

7996
Non-Return Valve - In-Line With Push-In Connection


ØD	P/N
4	7996 04 00
6	7996 06 00
8	7996 08 00
10	7996 10 00
12	7996 12 00

06064
Non-Return Valve - Push-In Connection


ØD	P/N
4	06064 00 001
6	06064 00 002
8	06064 00 003

06062
Non-Return Valve - Female To Female


ØD	NBR / FKM
M5	06062 00 001 / 006
1/8	06062 00 002 / 007
1/4	06062 00 003 / 008
3/8	06062 00 004 / 009
1/2	06062 00 005 / 010

06063
Non-Return Valve - Male To Female


ØD	NBR / FKM
M5	06063 00 001 / 006
1/8	06063 00 002 / 007
1/4	06063 00 003 / 008
3/8	06063 00 004 / 009
1/2	06063 00 005 / 010

4890
Non-Return Valve - Stainless Steel, Uni-Directional, Female To Female, BSPP Thread


C	DN	P/N
G1/8	10	4890 10 10
G1/4	10	4890 13 13
G3/8	15	4890 17 17
G1/2	15	4890 21 21
G3/4	20	4890 27 27
G1	25	4890 34 34

7318
Pressure Reducer - In-Line, With Push-In Connection


ØD	P/N
6	7316 06 00
8	7316 08 00
10	7316 10 00

7300
Pressure Regulator - Male BSPP With Push-In Connection & Plastic Body


ØD	C	P/N
4	G1/8	7300 04 10
6	G1/8	7300 06 10
6	G1/4	7300 06 13
8	G1/8	7300 08 10
8	G1/4	7300 08 13
8	G3/8	7300 08 17

7818
Pneumatic Sensor - Male Thread BSPP & Metric With Push-In Connection


C	P/N
M5x0,8	7818 04 19
G1/8	7818 04 10
G1/4	7818 04 13
G3/8	7818 04 17
G1/2	7818 04 21

7880
Blocking - Brass, Male Thread BSPP With Push-In Connection


ØD	C	P/N
6	G1/8	7880 06 10
6	G1/4	7880 06 13
8	G1/4	7880 08 13
8	G3/8	7880 08 17
10	G3/8	7880 10 17
12	G1/2	7880 12 21

7881
Blocking - Brass, Male Thread BSPP With Threaded Fitting


ØD1	ØD2	P/N
G1/8	G1/4	7881 13 10
G1/4	G1/4	7881 13 13
G3/8	G3/8	7881 17 17
G1/2	G1/2	7881 21 21

0669
Sleeve Valve - Pressure Reducer In-Line, With Push-In Connection


C	DN	P/N
M5x0,8	2	0669 02 19
G1/8	4	0669 04 10
G1/4	7	0669 07 13
G3/8	10	0669 10 17
G1/2	14	0669 14 21
G3/4	19	0669 19 27

06050
Quick Exhaust Valve - Nickel-Plated Brass


*Repair Kits Available

ØD	P/N
M5	06050 00 001
1/8	06050 00 002
1/4	06050 00 003
3/8	06050 00 004
1/2	06050 00 005
3/4	06050 00 006
1	06050 00 007

7870
Soft Start - Nickel-Plated Brass/ Stainless Steel, Push-In & BSPP Thread


ØD	C	P/N
8	G1/4	7870 08 13
10	G1/4	7870 10 13
10	G3/8	7870 10 17

Accessories - Blowguns

0622


N/P Brass & Hardened Steel - Button Operated Blowgun, BSP & NPT



ØD	P/N
G1/4	0622 26 73

0623


N/P Brass & Hardened Steel - Lever Operated Blowgun With Removable Nozzle, BSP & NPT



ØD	P/N
G1/4	0623 10 35

0659


Technical Polymer - Standard Blowgun With Angled Nozzle, BSP & NPT



ØD	P/N
G1/4	0659 00 13

0652


Technical Polymer - Progressive Control, Lower Connection, Interchangeable Nozzle, BSP & NPT



ØD	P/N
G1/4	0652 66 13

0654


Technical Polymer - Safety, Integrated Pressure Regulator



ØD	P/N
G1/4	0654 66 13

*Drops to 0.5bar when in contact with obstacle

770


Lightweight Polymer - Variable Flow Control, Pistol Grip Blowgun with Safety Tip, 1/4" FPT



P/N
771-S

00321


Nickel-Plated Brass - Angled Extended Nozzle, Female Connection



L	P/N
90	00321 00 001
200	00321 00 002
290	00321 00 003

00322


Nickel-Plated Brass - Angled Extended Nozzle With Protective Air-Screen, Female Connection



L	P/N
90	00322 00 001
200	00322 00 002
290	00322 00 003

600


Die-Cast Zinc - 600 Series Blowgun With Rubber Tip, Ergonomic Thumb Lever, NPT Female 1/4" Inlet, 1/8" Outlet



P/N
601

700


Die-Cast Aluminium - 700 Series Safety Blowgun, NPT Female 1/4" Inlet, 1/8" Outlet



P/N
700-S

MULTI-JET

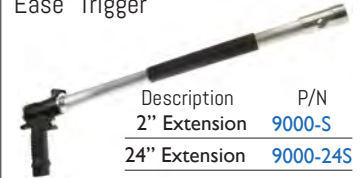

Die-Cast Zinc - Typhoon High Flow Blowgun, 3/8" NPT Inlet, OSHA Compliant



P/N
TYP-3800CS

CANNON


Die-Cast Aluminium, Brass, Stainless Steel - Cannon Extreme High Volume Blowgun, 3/4" NPT Female Inlet, "Extreme Ease" Trigger



Description	P/N
2" Extension	9000-S
24" Extension	9000-24S
48" Extension	9000-48S

0690 01


N/P Brass - Standard Multi-Purpose Nozzle, To Fit 0652 Blowgun



ØD	P/N
M12x1,25	0690 01 00

0690 02


N/P Brass - Safety Multi-Purpose Nozzle, To Fit 0652 Blowgun



ØD	P/N
M12x1,25	0690 02 00

0690 03


N/P Brass - Straight Tube Nozzle (Long), To Fit 0652 Blowgun



ØD	P/N
M12x1,25	0690 03 00

0690 04


N/P Brass - Straight Tube Nozzle (Short), To Fit 0652 Blowgun



ØD	P/N
M12x1,25	0690 04 00

0690 05


N/P Brass - Angled Tube Nozzle (Long), To Fit 0652 Blowgun



ØD	P/N
M12x1,25	0690 05 00

0690 06


N/P Brass - Osha Angled Tube Nozzle (Short), To Fit 0652 Blowgun



ØD	P/N
M12x1,25	0690 06 00

0690 07


N/P Brass - Safety Nozzle, For Fluidising Powder, To Fit 0652 Blowgun



ØD	P/N
M12x1,25	0690 07 00

0690 08


N/P Brass - Coanda Effect Nozzle, To Fit 0652 Blowgun



ØD	P/N
M12x1,25	0690 08 00

0690 10


N/P Brass - Booster Nozzle, To Fit 0652 Blowgun



ØD	P/N
M12x1,25	0690 10 00

0690 11


N/P Brass - Booster Nozzle With Air Screen, To Fit 0652 Blowgun



ØD	P/N
M12x1,25	0690 11 00

For accessories, adaptors, or further information please contact MVP

Couplings - Automatic Quick Couplings

SAFETY

Polymer, S/S, & N/P Brass -
9401E (EURO) Or 9401A (ARO),
Male Socket, BSP Taper & NPT



ØD	P/N
G1/4	9401E07 13
G3/8	9401E07 17
G1/2	9401E07 21
G1/4	9401A06 13
G3/8	9401A06 17
G1/2	9401A06 21

00111

N/P Brass - Male Socket



ØD	P/N
1/8	00111 00 001
1/4	00111 00 002
3/8	00111 00 003

00112

N/P Brass - Female Socket



ØD	P/N
1/8	00112 00 001
1/4	00112 00 002
3/8	00112 00 003

00211

N/P Brass - Male Plug



ØD	P/N
1/8	00211 00 01 02 NB
1/4	00211 00 01 03 NB
3/8	00211 00 01 04 NB

00212

N/P Brass - Female Plug



ØD	P/N
1/8	00212 00 01 02 NB
1/4	00212 00 01 03 NB
3/8	00212 00 01 04 NB

00132

N/P Brass - Female Socket



ØD	P/N
3/8	00132 00 001
1/2	00132 00 002

261AC

Hardened Steel - Male Plug



ØD	P/N
1/4	261AC 00 51 03 ZI
3/8	261AC 00 51 04 ZI
1/2	261AC 00 51 05 ZI

262AC

Hardened Steel - Female Plug



ØD	P/N
1/8	262AC 00 51 03 ZI
1/4	262AC 00 51 04 ZI
3/8	262AC 00 51 05 ZI

9114

N/P Brass - Female Socket,
Single Shut-Off, BSP Parallel,
Also Available in 304 Stainless Steel



ØD	P/N
G1/4	9114 13 13
G3/8	9114 13 17
G1/2	9114 13 21

9201

N/P Brass - Miniature Female
Socket, Double/Single Shut-Off,
BSP Parallel & Metric



ØD	P/N
M5x0,8	9201 20 19

9214

N/P Brass - Miniature Female
Socket, Double/Single Shut-Off,
BSP Parallel & Metric



ØD	P/N
M5x0,8	9214 20 19

9286/9086

N/P Brass - Miniature Female
Plug, Double/Single Shut-Off,
BSP Parallel & Metric





ØD	P/N
M5x0,8	9286 10 19
G1/8	9286 20 10
M5x0,8	9086 20 19
G1/8	9086 20 10

MULTI-SOCKET '190' SERIES

One socket for 4 different plugs

MVP is proud to offer a practical and cost-effective solution to incompatible couplings!

Male	ØD	P/N
	1/4	00191 00 001
	3/8	00191 00 002
	1/2	00191 00 003

Female	ØD	P/N
	1/4	00192 00 001
	3/8	00192 00 002
	1/2	00192 00 003



9287/9087

N/P Brass - Miniature Male Plug,
Double/Single Shut-Off, BSP
Parallel & Metric



ØD	P/N
M5x0,8	9287 10 19
G1/8	9287 20 10
M5x0,8	9087 20 19
G1/8	9087 20 10

LINKTECH QUICK COUPLINGS

Quick Couplings: Leak-Free Connection, Straight-Through, Single, & Double Shut-Off.

Materials: Acetal, Polypropylene, Chrome Brass, Medical Grade ABS, Polysulfone, Glass Filled Polypropylene.

Flow Size: 1/16" to 1/2"

Connection Size: 1/16" to 1"

Available Threads: Male or Female

Straight or Tapered, NPT/BSPP/ BSPT & SAE.

**These are interchangeable with existing thumb latching couplers.

Please contact us for more information.



Acetal



Polypropylene



Chrome Brass



Medical Grade ABS



Polysulfone



Glass Filled Polypropylene



Hose & Tubing - Push-Lock Hose & Adaptors

TBPL
PUSH-LOCK HOSE
Outer Layer: NBR/PVC smooth, oil resistant

Inner Armor: Cloth Textiles

Inside Finish: NBR/PVC smooth, abrasion, oil and weather resistant.

Fluids: Compressed Air -20°C +110°C
 Water 0°C +100°C
 Hydraulic Oil -20°C +70°C
 Water Glycol -20°C +70°C
 Diesel Fuel & Petrol


Int. inch	Int. mm	Ext. mm	Bend mm	W/P bar	B/P bar	Pack Mt.	RED	BLUE	GREEN	BLACK
1/4	6.3	124	45	16	64	100	TBPL 1/4 0 RO 100	TBPL 1/4 0 BL 100	TBPL 1/4 0 VE 100	TBPL 1/4 0 NE 100
3/8	9.6	15.5	75	16	64	100	TBPL 3/8 0 RO 100	TBPL 3/8 0 BL 100	TBPL 3/8 0 VE 100	TBPL 3/8 0 NE 100
1/2	12.7	18.7	90	16	64	100	TBPL 1/2 0 RO 100	TBPL 1/2 0 BL 100	TBPL 1/2 0 VE 100	TBPL 1/2 0 NE 100
5/8	16	22.9	115	16	64	80	TBPL 5/8 0 RO 080	TBPL 5/8 0 BL 080	TBPL 5/8 0 VE 080	TBPL 5/8 0 NE 080
3/4	19.2	26.5	135	16	64	80	TBPL 3/4 0 RO 080	TBPL 3/4 0 BL 080	TBPL 3/4 0 VE 080	TBPL 3/4 0 NE 080

13800
N/P Brass - PUSH-LOCK Female
 Hose Adaptor for Locking Hose


ØA	THREAD	ØTUBE	P/N
6	M10x1	1/4	13800 00 001
8	M12x1	1/4	13800 00 002
10	M16x1.5	1/4	13800 00 003
10	M16x1.5	3/8	13800 00 004
14	M20x1.5	3/8	13800 00 005
14	M20x1.5	1/2	13800 00 006
18	M24x1.5	1/2	13800 00 007
18	M24x1.5	5/8	13800 00 008
22	M30x1.5	3/4	13800 00 009

13810
N/P Brass - PUSH-LOCK Male
 Hose Adaptor for Locking Hose


THREAD	ØTUBE	P/N
1/8	1/4	13810 00 001
1/4	1/4	13810 00 002
1/4	3/8	13810 00 003
3/8	3/8	13810 00 004
3/8	1/2	13810 00 005
1/2	1/2	13810 00 006
1/2	5/8	13810 00 007
3/4	5/8	13810 00 008
3/4	3/4	13810 00 009

13820
N/P Brass - Nipple


THREAD	ØD	P/N
M10x1	1/8	13820 00 001
M10x1	1/4	13820 00 002
M10x1	3/8	13820 00 003
M12x1	1/8	13820 00 004
M12x1	1/4	13820 00 005
M12x1	3/8	13820 00 006
M16x1.5	1/4	13820 00 007
M16x1.5	3/8	13820 00 008
M16x1.5	1/2	13820 00 009
M20x1.5	3/8	13820 00 010
M20x1.5	1/2	13820 00 011
M24x1.5	1/2	13820 00 012
M24x1.5	3/4	13820 00 013
M30x1.5	3/4	13820 00 014
M30x1.5	1/2	13820 00 015

Hose & Tubing - Push-In Tubing

PUSH-IN TUBING
METRIC & IMPERIAL - The items listed below are what MAC carry as stock items.

If you cannot find the item you need please contact us directly as we may be able to source this for you.

Recoil available in most stock sizes. Twin-Recoil available in 4mm and 6mm as stocked items.

Contact us for tube Colours & Specifications.

SIZE	PU	PU TWIN	S.R NYLON	R. NYLON	FEP	KYNAR	PE	FDA PE	SPLATTER PROOF
4mm	✓	✓	✓	✓	✓				
6mm	✓	✓	✓	✓	✓	✓	✓	✓	
8mm	✓	✓	✓		✓	✓	✓	✓	✓
10mm	✓	✓	✓		✓		✓		
12mm	✓		✓			✓	✓		
14mm	✓								
16mm	✓								
1/8"	✓		✓			✓			
1/4"	✓		✓			✓	✓		
3/8"	✓		✓			✓	✓		
1/2"			✓			✓	✓		
9/16"	✓								


TUBE CUTTER
Polymer - Gives a clean cut to tubing at a right angle on size 3mm to 12mm

 P/N
 3000 71 00

CLIP
Clip Strips - For Tubing


ØD	P/N
4	CLIP 04 00
6	CLIP 06 00
8	CLIP 08 00
10	CLIP 10 00
12	CLIP 12 00
14	CLIP 14 00

Hose & Tubing - Chemical Resistance Chart

This information was provided by our suppliers and is to be used as a general reference guide to aid in the selection of the products in which chemical and material compatibility issues are a factor. This guide is not intended as a complete nor conclusive database.

The resistance of material can be greatly affected by the temperature, consistency, and presence of other chemicals.

Ultimately the consumer must determine the chemical compatibility of an item based on the conditions in which the product is being used.

	PUR	PE	PVC	Nylon	Kynar
Acetic Acid, Glacial	4	2	4	-	1
Acetic Acid, 30%	4	1	4	2	1
Acetone	4	2	4	1	4
Acetylene	1	4	1	1	1
Alkylene	4	-	-	-	-
Aluminum Chloride (aq)	3	2	1	-	1
Aluminum Nitrate (aq)	3	-	2	-	1
Ammonia Anhydrous	4	2	1	-	4
Ammonia Gas (cold)	3	-	3	1	4
Ammonia Gas (hot)	4	-	-	1	4
Ammonium Chloride (aq) 40%	2	1	1	-	1
Ammonium Sulfate (aq)	1	1	1	1	1
Amyl Alcohol	4	2	1	-	1
Amyl Naphthalene	4	-	-	-	-
Animal Fats	1	-	-	-	-
Aqua Regia	4	2	3	-	-
Arsenic Acid	3	2	1	-	1
Asphalt	2	1	1	-	1
ASTM Fuel A	2	-	-	-	-
ASTM Fuel B	3	-	-	-	-
ASTM Fuel C	3	1	4	-	-
Barium Chloride (aq)	1	2	1	1	1
Beer	2	2	1	1	1
Beet Sugar Liquors	4	1	1	-	1
Benzene	3	4	3	1	1
Benzine	2	-	-	-	-
Blast Furnace Gas	4	-	-	-	-
Bleach Solutions	4	1	1	-	1
Borax	1	1	1	-	1
Boric Acid	1	1	1	-	1
Brake Fluid	4	-	-	-	1
Brine	2	-	3	-	1
Bromine Water	4	-	3	4	1
Bunker Oil	2	-	-	-	-
Butane	1	3	3	1	1
Butter	1	-	-	-	-
Butyl Alcohol (Butanol)	3	1	3	1	1
Butylene	4	1	1	-	1
Calcium Chloride (aq)	1	1	3	1	1
Calcium Hydroxide (aq)	2	1	2	-	1
Calcium Nitrate (aq)	1	-	1	1	1
Calcium Sulfide (aq)	1	-	-	-	-
Cane Sugar Liquors	4	-	1	-	1
Carbolic Acid	3	4	3	-	-
Carbon Dioxide	1	2	1	-	1
Carbonic Acid	4	2	1	-	1
Carbon Monoxide	1	2	1	-	1
Carbon Tetrachloride	4	4	4	3	1
Castor Oil	1	1	1	-	1
Chlorine (dry)	4	3	4	4	1
Chlorine (wet)	4	3	-	4	1
Chloroform	4	4	4	3	1
Chlorox	4	-	-	-	-
Chromic Acid 50%	4	1	4	4	1
Citric Acid	1	1	2	1	1
Coal Tar (Creosote)	3	-	-	-	-
Coconut Oil	2	1	1	-	1
Cod Liver Oil	1	1	1	-	1
Coke Oven Gas	4	-	-	-	-
Copper Chloride (aq)	1	2	1	-	1
Copper Cyanide (aq)	1	2	1	-	1
Corn Oil	1	1	2	-	1
Cotton Seed Oil	1	1	2	-	1
Creosol (Methyl Phenol)	4	4	4	4	1
Cyclohexane	1	4	4	1	1
Denatured Alcohol	4	-	-	-	-
Detergent Solution	3	1	1	-	-
Diesel Oil	2	3	1	-	-
Dioxane	4	3	-	-	4
Dowtherm Oil	3	-	-	-	-
Dry Cleaning Fluids	4	-	-	-	-
Ethane	1	-	1	-	-
Ethyl Acrylate	4	-	-	-	1
Ethyl Alcohol (Ethanol)	4	2	3	3	1
Ethyl Benzene	4	-	-	-	-
Ethyl Cellulose	2	-	-	-	-
Ethyl Chloride	4	4	4	-	1
Ethyl Ether	3	4	4	-	1
Ethylene Chloride	4	4	4	-	-
Ethylene Glycol ² (Anti-Freeze)	2	1	1	1	1
Ethylene Oxide	4	3	3	1	1
Ethylene Trichloride	4	4	-	-	-
Ferric Chloride (aq)	1	2	1	-	1
Ferric Nitrate (aq)	1	2	1	-	1
Ferric Sulfate (aq)	2	1	1	-	1
Fluorine (Liquid)	4	3	4	4	1
Formaldehyde (RT)	4	2	1	1	1
Formic Acid	4	2	1	4	1
Freon 11	4	3	1	-	-
Freon 12	1	1	1	1	-
Freon 22	4	-	1	1	-
Fuel Oil (Bunker 'C')	2	3	1	-	1
Gasoline (100 Octane, High Test)	3	4	3	1	1
Glue	1	1	3	-	1
Glycerin (Glycerol)	1	1	1	1	1
Glycols	4	-	-	1	-
Green Sulfate Liquor	1	-	-	-	-
Hexane	2	4 ¹	2 ²	-	1
Hydraulic Oil	1	1-3	1	-	-
Hydrochloric Acid (cold) 37%	4	2	2	4	1
Hydrochloric Acid (hot) 37%	4	-	-	4	1
Hydrofluoric Acid (Conc.) (cold)	4	2	-	-	1
Hydrofluoric Acid (Conc.) (hot)	4	-	-	-	1
Hydrogen Gas	1	1	1	1	1
Isobutyl Alcohol	3	1	-	-	1
Isocetane	2	3	1	-	1
Isopropyl Acetate	4	3	4	-	-
Isopropyl Alcohol (Isopropanol)	3	1	-	1	1
Isopropyl Ether	2	1	2	-	1
Kerosene	1	4	2	1	1

	PUR	PE	PVC	Nylon	Kynar
Lacquers	4	1	4	-	-
Lacquer Solvents	4	1	3	-	-
Lard	1	1	1	-	1
Lavender Oil	4	-	-	-	-
Lead Acetate (aq)	4	1	1	-	1
Linseed Oil	2	3	1	1	1
Lubified Petroleum Gas	1	-	-	1	-
Lubricating Oils	1-2 ³	4	2	1	1
Lye	4	1-4 ⁴	1-2	-	-
Magnesium Chloride (aq)	1	2	1	1	1
Magnesium Hydroxide (aq)	4	2	1	-	1
Mercury	1	1	1	1	1
Methane	3	-	2	1	1
Methyl Acetate	4	2	4	1	1
Methyl Acrylate	4	-	-	-	1
Methyl Alcohol (Methanol)	4	1	1	1	1
Methyl Butyl Ketone	4	-	1	-	-
Methyl Chloride	4	4	4	1	1
Methylene Chloride	4	4	4	-	1
Methyl Ethyl Ketone	4	2	4	1	4
Methyl Isobutyl Ketone	4	3	4	1	4
Milk	4	1	1	1	1
Mineral Oil	1	3	1	1	1
Motor Oil 20W, 10W40	2	3	2	1	1
Naphtha (Lighter Fluid)	2	4	1	1	1
Naphthalene (Moth Repellent)	2	2	4	1	1
Natural Gas	2	-	1	-	1
Neatsfoot Oil	1	-	-	-	-
Nitric Acid 70%	4	2	-	4	1
Nitric Acid (Dilute) 10%	3	2	1	4	1
Nitroethane	4	-	-	-	1
N-Octane	4	1	-	-	1
Oleic Acid	2	1	3	1	1
Oleum Spirits	3	4	4	-	4
Olive Oil	1	1	-	-	1
Oxygen (cold)	1	-	-	1	1
Oxygen (200-400F)	4	-	-	-	-
Paint Thinner, Duco	4	-	-	-	-
Perchloric Acid	4	1	3	-	1
Perchloroethylene	4	4	3	3	1
Petroleum - Below 250F	2	3	-	-	1
Petroleum - Above 250F	4	-	-	4	-
Phenol (Carbolic Acid)	3	2	3-4	4	1
Phenyl Ethyl Ether	4	-	-	-	-
Phosphoric Acid - 45%	4	1	2	2	1
Pickling Solution	4	-	-	-	-
Picric Acid	2	1	4	3	1
Potassium Acetate (aq)	4	-	-	-	-
Potassium Chloride (aq)	1	2	1	-	1
Potassium Cyanide (aq)	1	2	1	-	1
Potassium Hydroxide (aq)	4	1	1	3	4
Producer Gas	1	1	1	-	-
Propane	1	4	1	1	1
Propyl Alcohol (Propanol)	4	1	1	-	1
Propylene	4	-	2	-	-
Propylene Glycol (Anti-Freeze)	3	1	3	2	1
Propylene Oxide	4	2	-	-	4
Pydraul, 10E, 29 ELT	4	-	-	-	-
Pydraul 30E, 50E, 65E	4	-	-	-	-
Pydraul, 115E	4	-	-	-	-
Pydraul 230E, 312C, 540C	4	-	-	-	-
Rapeseed Oil	2	4	-	-	-
RJ-1 (MIL-F-23338 B)	1	-	-	-	-
RP-1 (MIL-F-25576 C)	1	-	-	-	-
Salt Water	2	1	1	1	1
Sewage	1	-	-	-	-
Silicate Esters	1	-	-	-	-
Silicone Oils	1	1	1	-	-
Silver Nitrate	1	1	1	-	1
Skydrol 500	4	-	-	-	-
Skydrol 700	4	-	-	-	-
Soap Solutions	3	4	1	1	-
Sodium Chloride (aq)	1	1	1	1	-
Sodium Hydroxide (aq)	4	1	1	2	4
Sodium Peroxide (aq)	4	1	2	-	1
Sodium Phosphate (aq)	1	-	-	-	1
Sodium Sulfate (aq)	1	1	1	-	-
Soy Bean Oil	2	1	1	-	1
Stoddard Solvent	1	3	3	-	-
Styrene (Monomer)	4	-	4	1	1
Sucrose Solution	4	2	-	-	-
Sulfuric Acid (Dilute Battery Acid)	3	1	1	-	1
Sulfuric Acid (Conc)	4	2	4	-	1
Sulfuric Acid (20% Oleum)	4	-	4	-	4
Sulfurous Acid	4	2	1	-	-
Tannic Acid	4	1	1	-	1
Tetrachlorethylene	4	2	4	-	-
Toluene (Toluol)	4	3	4	1	1
Transformer Oil	2	-	2	-	-
Transmission Fluid Type A	2	-	-	-	-
Trichloroethane	4	4	3	3	1
Trichloroethylene	4	4	4	3	1
Turbine Oil	1	3	1	1	-
Turpentine	4	4	4	1	1
Varnish	3	3	4	-	1
Vinegar	2	1	1	1	1
Vinyl Chloride	4	4	4	-	1
Water	1	1	1	1	1
Whiskey, Wines	2	1	1	1	1
White Oil	1	-	-	-	-
Wood Oil	3	-	-	-	-
Xylene	4	4	4	1	1
Zinc Acetate (aq)	4	-	-	-	1
Zinc Chloride (aq)	2	1	1	1	1

1 Petroleum Base 2 Synthetic Base = 1, Petroleum Base = 3
 3 SAE 10, 20, 30, 40, 50 = 1, Petroleum = 2
 4 Calcium Hydroxide & Potassium (Hydroxide=1, Sodium Hydroxide=4) 5 See Propylene Glycol 6 See Ethylene Glycol

Rating Scale

- 1= Little or no impact
- 2= Minor effect
- 3= Moderate effect
- 4= Severe effect



MAC VALVES Pacific Inc.
20 Alfred Street, Onehunga
Auckland, New Zealand
NZ: 0800 770 780
AU: 1800 551 874
fax: 64 (09) 634 9401
e: sales@macvalves.co.nz
w: www.macvalves.co.nz