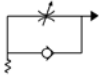


57901

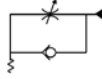
Flow Control Regulator -
Orienting For Cylinders -
Universal Short



ØD	C	P/N
4	M5	57901 00 002
4	1/8	57901 00 003
5	M5	57901 00 004
5	1/8	57901 00 005
5	1/4	57901 00 006
6	M5	57901 00 007
6	1/8	57901 00 008
6	1/4	57901 00 009
8	1/8	57901 00 010
8	1/4	57901 00 011
8	3/8	57901 00 016
10	1/4	57901 00 017
10	3/8	57901 00 012
12	3/8	57901 00 013
12	1/2	57901 00 014
14	1/2	57901 00 015

57910

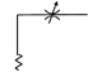
Flow Control Regulator -
Orienting For Valves - Universal
Short



ØD	C	P/N
4	M5	57910 00 002
4	1/8	57910 00 003
5	M5	57910 00 004
5	1/8	57910 00 005
5	1/4	57910 00 006
6	M5	57910 00 007
6	1/8	57910 00 008
6	1/4	57910 00 009
8	1/8	57910 00 010
8	1/4	57910 00 011
8	3/8	57910 00 016
10	1/4	57910 00 017
10	3/8	57910 00 012
12	3/8	57910 00 013
12	1/2	57910 00 014
14	1/2	57910 00 015

57920

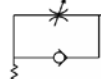
Flow Control Regulator -
Orienting Bi-Directional -
Universal Short



ØD	C	P/N
4	M5	57920 00 002
4	1/8	57920 00 003
5	M5	57920 00 004
5	1/8	57920 00 005
5	1/4	57920 00 006
6	M5	57920 00 007
6	1/8	57920 00 008
6	1/4	57920 00 009
8	1/8	57920 00 010
8	1/4	57920 00 011
8	3/8	57920 00 016
10	1/4	57920 00 017
10	3/8	57920 00 012
12	3/8	57920 00 013
12	1/2	57920 00 014
14	1/2	57920 00 015

57905

Flow Control Regulator -
Orienting For Cylinders -
Universal Short



ØD	C	P/N
4	M5	57905 00 002
4	1/8	57905 00 003
5	M5	57905 00 004
5	1/8	57905 00 005
5	1/4	57905 00 006
6	M5	57905 00 007
6	1/8	57905 00 008
6	1/4	57905 00 009
8	1/8	57905 00 010
8	1/4	57905 00 011
8	3/8	57905 00 016
10	1/4	57905 00 017
10	3/8	57905 00 012
12	3/8	57905 00 013
12	1/2	57905 00 014
14	1/2	57905 00 015

57915

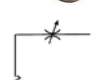
Flow Control Regulator -
Orienting For Valves - Universal
Short



ØD	C	P/N
4	M5	57915 00 002
4	1/8	57915 00 003
5	M5	57915 00 004
5	1/8	57915 00 005
5	1/4	57915 00 006
6	M5	57915 00 007
6	1/8	57915 00 008
6	1/4	57915 00 009
8	1/8	57915 00 010
8	1/4	57915 00 011
8	3/8	57915 00 016
10	1/4	57915 00 017
10	3/8	57915 00 012
12	3/8	57915 00 013
12	1/2	57915 00 014
14	1/2	57915 00 015

57925

Flow Control Regulator -
Orienting Bi-Directional -
Universal Short



ØD	C	P/N
4	M5	57925 00 002
4	1/8	57925 00 003
5	M5	57925 00 004
5	1/8	57925 00 005
5	1/4	57925 00 006
6	M5	57925 00 007
6	1/8	57925 00 008
6	1/4	57925 00 009
8	1/8	57925 00 010
8	1/4	57925 00 011
8	3/8	57925 00 016
10	1/4	57925 00 017
10	3/8	57925 00 012
12	3/8	57925 00 013
12	1/2	57925 00 014
14	1/2	57925 00 015

08870

Logic Element - In-Line, 'OR' Type



ØD	P/N
1/8	TV18
1/4	08870 00 001

08872

Logic Element - In-Line 'AND' Type



ØD	P/N
1/8	08872 00 001

Function Fittings - Axial Valves

4202 / VIP



Nickel-Plated Brass

Legris & OMAL Axial Valve - Normally Open OR Normally Closed,
Double Female, BSPP, NBR/FKM/EPDM Seals, Sizes "3/8 to 2"

ØD	P/N
G3/8	4202 10 17 20
G1/2	4202 15 21 20
G3/4	4202 20 27 20
G1	4202 25 34 20
G1 1/4	4202 32 42 20
G1 1/2	4202 40 49 20
G2	4202 50 48 20



Function Fittings - Pneumatic Actuator

DAN



Aluminium Alloy/Stainless Steel

OMAL Double Acting ('DAN') Pneumatic Actuator, FKM/NBR Seals,
Torque 8Nm to 8000Nm, Rotation Angle 90°,
Temp.: from 0°C to +80°C
(from -20°C with dry air only.)

Air supply: 5,6 bar; max. 84 bar.
Operating media: compressed
filtered air, not necessarily
lubricated. In case of lubricated
air, either non detergent oil or
NBR compatible oil must be used.



* Please ask for further information