

Function Fittings - Flow Control Regulators

7010

Flow Control Regulator - With Recessed Adjustment Screw, BSPP & M5 Thread

ØD	C	P/N
4	M5x0,8	7010 04 19
4	G1/8	7010 04 10
6	M5x0,8	7010 06 19
6	G1/8	7010 06 10
6	G1/4	7010 06 13
8	G1/8	7010 08 10
8	G1/4	7010 08 13
8	G3/8	7010 08 17
10	G1/4	7010 10 13
10	G3/8	7010 10 17
10	G1/2	7010 10 21
12	G3/8	7010 12 17
12	G1/2	7010 12 21


7660

Flow Control Regulator - Miniature BSPP & Metric Thread

ØD	C	P/N
4	M5x0,8	7660 04 19
4	G1/8	7660 04 10
6	M5x0,8	7660 06 19
6	G1/8	7660 06 10
6	G1/4	7660 06 13
8	G1/8	7660 08 10
8	G1/4	7660 08 13


7040

Flow Control Regulator - Compact, Swivel Outlet Type, BSPP Thread

ØD	C	P/N
6	G1/8	7060 06 10
6	G1/4	7060 06 13
8	G1/8	7060 08 10
8	G1/4	7060 08 13
8	G3/8	7060 08 17
10	G1/4	7060 10 13
10	G3/8	7060 10 17
12	G3/8	7060 12 17
12	G1/2	7060 12 21


7060

Flow Control Regulator - Compact, BSPP Thread

ØD	C	P/N
4	G1/8	7060 04 10
6	G1/8	7060 06 10
6	G1/4	7060 06 13
8	G1/8	7060 08 10
8	G1/4	7060 08 13
8	G3/8	7060 08 17
10	G1/4	7060 10 13
10	G3/8	7060 10 17
12	G3/8	7060 12 17
12	G1/2	7060 12 21


7669

Flow Control Regulator - Miniature, BSPP & Metric Thread

ØD	C	P/N
4	M5x0,8	7669 04 19
4	G1/8	7669 04 10
6	M5x0,8	7669 06 19
6	G1/8	7669 06 10
6	G1/4	7669 06 13
8	G1/8	7669 08 10
8	G1/4	7669 08 13


7776

Flow Control Regulator - In-Line With Push-In Connections, Panel Mountable

ØD	P/N
4	7776 04 00
6	7776 06 00
8	7776 08 00
10	7776 10 00
12	7776 12 00


7770

Flow Control Regulator - In-Line With Push-In Connection

ØD	P/N
4	7770 04 00
6	7770 06 00
8	7770 08 00
10	7770 10 00
12	7770 12 00


7100

Flow Control Regulator - Metal Type - Compact Push-In Connection, BSPP Thread

ØD	C	P/N
4	G1/8	7100 04 10
6	G1/8	7100 06 10
6	G1/4	7100 06 13
8	G1/8	7100 08 10
8	G1/4	7100 08 13
8	G3/8	7100 08 17
10	G1/4	7100 10 13
10	G3/8	7100 10 17
12	G3/8	7100 12 17
12	G1/2	7100 12 21
14	G1/2	7100 14 21


7110

Flow Control Regulator - Metal Type - Compact With Threaded Fitting, BSPP Thread

C	P/N
G1/8	7110 10 10
G1/4	7110 13 13
G3/8	7110 17 17
G1/2	7110 21 21


7130

Flow Control Regulator - Metal Type - With Push-In Connection, BSPP Recessed Adjustment Screw

ØD	C	P/N
4	M5x0,8	7130 04 19
4	G1/8	7130 04 10
6	M5x0,8	7130 06 19
6	G1/8	7130 06 10
6	G1/4	7130 06 13
8	G1/8	7130 08 10
8	G1/4	7130 08 13
8	G3/8	7130 08 17


7762

Flow Control Regulator - Metal Type - With Brass Compression fitting & Ext. Adjustment Screw, BSPP Thread

ØD	C	P/N
8	G1/8	*7762 08 10
10	G1/4	7762 10 13
14	G3/8	7762 14 17
18	G1/2	7762 18 21



*7762 08 10 - Comes with Adjustment Knurl

7810

Flow Control Regulator - **Stainless Steel** With Threaded Fitting, BSPP & Metric, Recessed Adjustment Screw

C1 - C2	P/N
G1/8	7810 10 10
G1/4	7810 13 13
G3/8	7810 17 17
G1/2	7810 21 21


7812

Flow Control Regulator - **Stainless Steel** With Threaded Fitting, BSPP & Metric, Recessed Adjustment Screw

C1 - C2	P/N
G1/8	7812 10 10
G1/4	7812 13 13
G3/8	7812 17 17
G1/2	7812 21 21


08850

Flow Control Regulator - Uni-Directional

ØD	P/N
M5	08850 00 001
1/8	08850 00 002
1/4	08850 00 003
3/8	08850 00 004
1/2	08850 00 005


08860

Flow Control Regulator - Bi-Directional

ØD	P/N
M5	08860 00 001
1/8	08860 00 002
1/4	08860 00 003
3/8	08860 00 004
1/2	08860 00 005


900

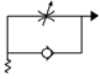
Flow Control Regulator - Anodised Aluminium, One-Way

ØD	P/N
1/8	901
1/4	902
1/2	904



57901

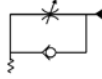
Flow Control Regulator -
Orienting For Cylinders -
Universal Short



ØD	C	P/N
4	M5	57901 00 002
4	1/8	57901 00 003
5	M5	57901 00 004
5	1/8	57901 00 005
5	1/4	57901 00 006
6	M5	57901 00 007
6	1/8	57901 00 008
6	1/4	57901 00 009
8	1/8	57901 00 010
8	1/4	57901 00 011
8	3/8	57901 00 016
10	1/4	57901 00 017
10	3/8	57901 00 012
12	3/8	57901 00 013
12	1/2	57901 00 014
14	1/2	57901 00 015

57910

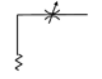
Flow Control Regulator -
Orienting For Valves - Universal
Short



ØD	C	P/N
4	M5	57910 00 002
4	1/8	57910 00 003
5	M5	57910 00 004
5	1/8	57910 00 005
5	1/4	57910 00 006
6	M5	57910 00 007
6	1/8	57910 00 008
6	1/4	57910 00 009
8	1/8	57910 00 010
8	1/4	57910 00 011
8	3/8	57910 00 016
10	1/4	57910 00 017
10	3/8	57910 00 012
12	3/8	57910 00 013
12	1/2	57910 00 014
14	1/2	57910 00 015

57920

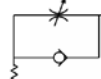
Flow Control Regulator -
Orienting Bi-Directional -
Universal Short



ØD	C	P/N
4	M5	57920 00 002
4	1/8	57920 00 003
5	M5	57920 00 004
5	1/8	57920 00 005
5	1/4	57920 00 006
6	M5	57920 00 007
6	1/8	57920 00 008
6	1/4	57920 00 009
8	1/8	57920 00 010
8	1/4	57920 00 011
8	3/8	57920 00 016
10	1/4	57920 00 017
10	3/8	57920 00 012
12	3/8	57920 00 013
12	1/2	57920 00 014
14	1/2	57920 00 015

57905

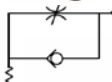
Flow Control Regulator -
Orienting For Cylinders -
Universal Short



ØD	C	P/N
4	M5	57905 00 002
4	1/8	57905 00 003
5	M5	57905 00 004
5	1/8	57905 00 005
5	1/4	57905 00 006
6	M5	57905 00 007
6	1/8	57905 00 008
6	1/4	57905 00 009
8	1/8	57905 00 010
8	1/4	57905 00 011
8	3/8	57905 00 016
10	1/4	57905 00 017
10	3/8	57905 00 012
12	3/8	57905 00 013
12	1/2	57905 00 014
14	1/2	57905 00 015

57915

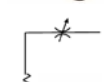
Flow Control Regulator -
Orienting For Valves - Universal
Short



ØD	C	P/N
4	M5	57915 00 002
4	1/8	57915 00 003
5	M5	57915 00 004
5	1/8	57915 00 005
5	1/4	57915 00 006
6	M5	57915 00 007
6	1/8	57915 00 008
6	1/4	57915 00 009
8	1/8	57915 00 010
8	1/4	57915 00 011
8	3/8	57915 00 016
10	1/4	57915 00 017
10	3/8	57915 00 012
12	3/8	57915 00 013
12	1/2	57915 00 014
14	1/2	57915 00 015

57925

Flow Control Regulator -
Orienting Bi-Directional -
Universal Short



ØD	C	P/N
4	M5	57925 00 002
4	1/8	57925 00 003
5	M5	57925 00 004
5	1/8	57925 00 005
5	1/4	57925 00 006
6	M5	57925 00 007
6	1/8	57925 00 008
6	1/4	57925 00 009
8	1/8	57925 00 010
8	1/4	57925 00 011
8	3/8	57925 00 016
10	1/4	57925 00 017
10	3/8	57925 00 012
12	3/8	57925 00 013
12	1/2	57925 00 014
14	1/2	57925 00 015

08870

Logic Element - In-Line, 'OR' Type



ØD	P/N
1/8	TV18
1/4	08870 00 001

08872

Logic Element - In-Line 'AND' Type



ØD	P/N
1/8	08872 00 001

Function Fittings - Axial Valves

4202 / VIP



Nickel-Plated Brass

Legris & OMAL Axial Valve - Normally Open OR Normally Closed,
Double Female, BSPP, NBR/FKM/EPDM Seals, Sizes "3/8 to 2"

ØD	P/N
G3/8	4202 10 17 20
G1/2	4202 15 21 20
G3/4	4202 20 27 20
G1	4202 25 34 20
G1 1/4	4202 32 42 20
G1 1/2	4202 40 49 20
G2	4202 50 48 20



Function Fittings - Pneumatic Actuator

DAN

Aluminium Alloy/Stainless Steel

OMAL Double Acting ('DAN') Pneumatic Actuator, FKM/NBR Seals,
Torque 8Nm to 8000Nm, Rotation Angle 90°,
Temp.: from 0°C to +80°C

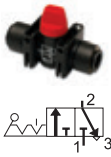
(from -20°C with dry air only.)
Air supply: 5,6 bar; max. 84 bar.
Operating media: compressed
filtered air, not necessarily
lubricated. In case of lubricated
air, either non detergent oil or
NBR compatible oil must be used.



* Please ask for further information

Function Fittings - Ball Valves

7913

Mini Ball Valve - 3/2 With Vent & Push-In Connection, Polymer


ØD	P/N
4	7913 04 00
6	7913 06 00
8	7913 08 00
10	7913 10 00
12	7913 12 00

7910

Mini Ball Valve - 2/2 With Push-In Connection, Polymer


ØD	P/N
4	7910 04 00
6	7910 06 00
8	7910 08 00
10	7910 10 00
12	7910 12 00

06065

Mini Ball Valve - Female ISO228 To Female ISO228, Nickel-Plated Brass


ØD	P/N
1/8	06065 00 001
1/4	06065 00 002
3/8	06065 00 003
1/2	06065 00 004
3/4	06065 00 005

06066

Mini Ball Valve - Male ISO228 To Female ISO228, Nickel-Plated Brass


ØD	P/N
1/8	06066 00 001
1/4	06066 00 002
3/8	06066 00 003
1/2	06066 00 004
3/4	06066 00 005

4905

"Economy" Female To Female With Standard Handle, BSP Parallel, Nickel-Plated Brass


C	DN	PN	P/N
G1/4	10	25	4905 00 13
G3/8	10	25	4905 00 17
G1/2	14	25	4905 00 21
G3/4	20	25	4905 00 27
GI	25	25	4905 00 34
GI 1/4	32	16	4905 00 42
GI 1/2	40	16	4905 00 49
G2	50	16	4905 00 48

L100

2-Way Full Bore, Female To Female, Suitable for Low Pressures, Nickel-Plated Brass


ØD	P/N
3/8	DN 10
1/2	DN 15
3/4	DN 20
1	DN 25
1 1/4	DN 32
1 1/2	DN 40
2	DN 50

06300

Female RP ISO 7 To Female RP ISO 7 Valve, Nickel-Plated Brass


ØD	C	P/N
1/8	1/8	06300 00 001
1/4	1/4	06300 00 002
3/8	3/8	06300 00 003
1/2	1/2	06300 00 004
3/4	3/4	06300 00 055

06310

Taper Male R ISO 7 To Female RP ISO 7 Valve, Nickel-Plated Brass


ØD	C	P/N
1/8	1/8	06310 00 001
1/4	1/8	06310 00 002
1/4	1/4	06310 00 003
3/8	3/8	06310 00 004
1/2	1/2	06310 00 005
3/4	3/4	06310 00 066

06410

Parallel Male GA ISO 228 To Female G ISO 228 Valve, Nickel-Plated Brass


ØD	C	P/N
1/8	1/8	06410 00 001
1/4	1/8	06410 00 002
1/4	1/4	06410 00 003
3/8	3/8	06410 00 004
1/2	1/2	06410 00 005
3/4	3/4	06410 00 066

06320

Parallel Male GA ISO 228 To Female RP ISO 7 Valve, Nickel-Plated Brass


ØD	C	P/N
1/8	1/8	06320 00 001
1/4	1/8	06320 00 002
1/4	1/4	06320 00 003
3/8	3/8	06320 00 004
1/2	1/2	06320 00 005
3/4	3/4	06320 00 066

06330

Taper Male R ISO 7 To Parallel Male GA ISO 228 Valve, Nickel-Plated Brass


ØD	C	P/N
1/8	1/8	06320 00 001
1/4	1/8	06320 00 002
1/4	1/4	06320 00 003
3/8	3/8	06320 00 004
1/2	1/2	06320 00 005
3/4	3/4	06320 00 066

06400

Female G ISO 228 To Female G ISO 228 Valve, Nickel-Plated Brass


ØD	C	P/N
1/8	1/8	06400 00 001
1/4	1/4	06400 00 002
3/8	3/8	06400 00 003
1/2	1/2	06400 00 004
3/4	3/4	06400 00 055

06710

3-Way Valve 'T' Female G ISO 228, Nickel-Plated Brass


ØD	ØD	ØD	P/N
1/8	1/8	1/8	06710 00 001
1/4	1/4	1/4	06710 00 002
3/8	3/8	3/8	06710 00 003

06560

Push-In Connection, Nickel-Plated Brass


ØD	C	P/N
4	4	06560 00 001
6	6	06560 00 002
8	8	06560 00 003
10	10	06560 00 075
12	12	06560 00 076

06600

Exhaust Hole Female G ISO 228 To Female G ISO 228 Valve, Nickel-Plated Brass


ØD	C	P/N
1/8	1/8	06600 00 001
1/4	1/4	06600 00 002
3/8	3/8	06600 00 003

06700

3-Way Valve 'L' Female G ISO 228, Nickel-Plated Brass

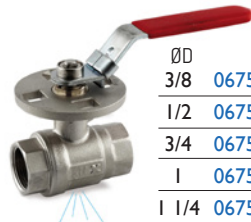

ØD	ØD	ØD	P/N
1/8	1/8	1/8	06700 00 001
1/4	1/4	1/4	06700 00 002
3/8	3/8	3/8	06700 00 003

06720

'L' Female G ISO 228 Valve, Nickel-Plated Brass


ØD	ØD	P/N
1/8	1/8	06720 00 001
1/4	1/4	06720 00 002
3/8	3/8	06720 00 003

06755L

Lockable With Exhaust Vent, Nickel-Plated Brass


ØD	P/N
3/8	06755 L0 001
1/2	06755 L0 002
3/4	06755 L0 003
1	06755 L0 004
1 1/4	06755 L0 005
1 1/2	06755 L0 006
2	06755 L0 007

06920

Plastic - Coloured Plate For Handles


Type	P/N
A	06920 A0 30 00 RO
B	06920 B0 30 00 RO
A	06920 A0 30 00 GI
B	06920 B0 30 00 GI
A	06920 A0 30 00 BL
B	06920 B0 30 00 BL
A	06920 A0 30 00 VE
B	06920 B0 30 00 VE
A	06920 A0 30 00 VE
B	06920 B0 30 00 VE

06910

Plastic - Long Handle


Type	Size	P/N
A	1/8, 1/4, 3/8	06910 A0 30 00 00
B	1/2, 3/4	06910 B0 30 00 00

0439

Lockable, Female To Female With Vent, Nickel-Plated Brass


C	DN	P/N
G1/4	7	0439 07 13
G3/8	10	0439 10 17
G1/2	13	0439 13 21

06915

Spindle Extension With Long Handle & Screw


Type	Size	P/N
A	1/8, 1/4, 3/8	06915 00 001
B	1/2, 3/4	06915 00 002

L424



Stainless Steel - **2-Way Full-Bore**
3 Piece Casted Threaded-Ends
Or Butt Weld, PTFE Seals



ØD	P/N
1/4	DN 08
3/8	DN 10
1/2	DN 15
3/4	DN 20
1	DN 25
1 1/4	DN 32
1 1/2	DN 40
2	DN 50
2 1/2	DN 65
3	DN 80
4	DN 100

4810



Stainless Steel - **"Economy"**
Version, Female To Female, BSP
Parallel



C	DN	P/N
G1/4	8	4810 08 13
G3/8	10	4810 10 17
G1/2	15	4810 15 21
G3/4	20	4810 20 27
G1	25	4810 25 34

LHA



High Ciclicity Ball Valves

Range of 4: Carbon Steel, Carbon Steel (Manual Operated),
Stainless Steel, & Stainless Steel PTFE-TFM1600 seats

Fluid range: Different fluids,
liquid and gaseous, compatible with
constituent materials.

Antistatic, & FireSafe Design

* Please contact us for sizes & part numbers



Function Fittings - Silencers

0670



Threaded Silencer - Nickel-Plated
Brass/Sintered Bronze, Threaded
BSP Parallel



ØD	P/N
G1/8	0670 00 10
G1/4	0670 00 13
G3/8	0670 00 17
G1/2	0670 00 21
G3/4	0670 00 27
G1	0670 00 34

0671



Push-In Silencer - Nickel-Plated
Brass/Sintered Bronze



ØD	P/N
4	0671 04 00
6	0671 06 00
8	0671 08 00
10	0671 10 00
12	0671 12 00

0672



Flow Control Silencer - Nickel-
Plated Brass/Sintered Bronze,
Male BSP Parallel



ØD	P/N
G1/8	0672 00 10
G1/4	0672 00 13
G3/8	0672 00 17
G1/2	0672 00 21

07050



Flow Control Silencer - Brass
Sintered Bronze



ØD	P/N
1/8	07050 00 001
1/4	07050 00 002
3/8	07050 00 003
1/2	07050 00 004

0673



Compact Silencer - Brass/
Sintered Bronze, Threaded BSP
Parallel, Metric & UNF



ØD	P/N
G1/8	0673 00 10
G1/4	0673 00 13
G3/8	0673 00 17
M5x0,8	0673 00 19
10-32	0673 00 20
G1/2	0673 00 21

07070



Threaded Silencer - Acetel Resin
& Plastic Soundproofing Material



ØD	P/N
1/8	07070 00 001
1/4	07070 00 002
3/8	07070 00 003
1/2	07070 00 004
3/4	07070 00 005
1	07070 00 006

MSR



Plastic Silencer - Operating
Pressure Range: 0 to 0.9MPa
Ambient Temp.: 0 to +60C



ØD	P/N
1/8	MSR01-S
1/8	MSR01-B
1/4	MSR02-S
1/4	MSR02-B

0674



Threaded Silencer - Male BSP
Parallel & Metric



ØD	P/N
G1/8	0674 00 10
G1/4	0674 00 13
G3/8	0674 00 17
M5x0,8	0674 00 19
G1/2	0674 00 21
G3/4	0674 00 27
G1	0674 00 34

0676



Flow Control Silencer - Male BSP
Parallel



ØD	P/N
G1/8	0676 00 10
G1/4	0676 00 13
G3/8	0676 00 17
M5x0,8	0676 00 19
G1/2	0676 00 21

B##



'Bantam' Muffler - Zinc-Plated
Steel & Brass Acoustic Element
* Male Option Available In Stainless



ØD	P/N	ØD	P/N
1/8	*B18	1	*B88
1/4	*B28	1 1/4	B108
3/8	*B38	1 1/2	B128
1/2	*B48	2	B168
3/4	*B68		

B##



'Bantam' Muffler - Zinc-Plated
Steel & Brass Acoustic Element,
Female Options: 1/8" to 1/2"



ØD	P/N
1/8	B18
1/4	B28
3/8	B38
1/2	B48

Function Fittings - Various

7996
Non-Return Valve - In-Line With Push-In Connection


ØD	P/N
4	7996 04 00
6	7996 06 00
8	7996 08 00
10	7996 10 00
12	7996 12 00

06064
Non-Return Valve - Push-In Connection


ØD	P/N
4	06064 00 001
6	06064 00 002
8	06064 00 003

06062
Non-Return Valve - Female To Female


ØD	NBR / FKM
M5	06062 00 001 / 006
1/8	06062 00 002 / 007
1/4	06062 00 003 / 008
3/8	06062 00 004 / 009
1/2	06062 00 005 / 010

06063
Non-Return Valve - Male To Female


ØD	NBR / FKM
M5	06063 00 001 / 006
1/8	06063 00 002 / 007
1/4	06063 00 003 / 008
3/8	06063 00 004 / 009
1/2	06063 00 005 / 010

4890
Non-Return Valve - Stainless Steel, Uni-Directional, Female To Female, BSPP Thread


C	DN	P/N
G1/8	10	4890 10 10
G1/4	10	4890 13 13
G3/8	15	4890 17 17
G1/2	15	4890 21 21
G3/4	20	4890 27 27
G1	25	4890 34 34

7318
Pressure Reducer - In-Line, With Push-In Connection


ØD	P/N
6	7316 06 00
8	7316 08 00
10	7316 10 00

7300
Pressure Regulator - Male BSPP With Push-In Connection & Plastic Body


ØD	C	P/N
4	G1/8	7300 04 10
6	G1/8	7300 06 10
6	G1/4	7300 06 13
8	G1/8	7300 08 10
8	G1/4	7300 08 13
8	G3/8	7300 08 17

7818
Pneumatic Sensor - Male Thread BSPP & Metric With Push-In Connection


C	P/N
M5x0,8	7818 04 19
G1/8	7818 04 10
G1/4	7818 04 13
G3/8	7818 04 17
G1/2	7818 04 21

7880
Blocking - Brass, Male Thread BSPP With Push-In Connection


ØD	C	P/N
6	G1/8	7880 06 10
6	G1/4	7880 06 13
8	G1/4	7880 08 13
8	G3/8	7880 08 17
10	G3/8	7880 10 17
12	G1/2	7880 12 21

7881
Blocking - Brass, Male Thread BSPP With Threaded Fitting


ØD1	ØD2	P/N
G1/8	G1/4	7881 13 10
G1/4	G1/4	7881 13 13
G3/8	G3/8	7881 17 17
G1/2	G1/2	7881 21 21

0669
Sleeve Valve - Pressure Reducer In-Line, With Push-In Connection


C	DN	P/N
M5x0,8	2	0669 02 19
G1/8	4	0669 04 10
G1/4	7	0669 07 13
G3/8	10	0669 10 17
G1/2	14	0669 14 21
G3/4	19	0669 19 27

06050
Quick Exhaust Valve - Nickel-Plated Brass


*Repair Kits Available

ØD	P/N
M5	06050 00 001
1/8	06050 00 002
1/4	06050 00 003
3/8	06050 00 004
1/2	06050 00 005
3/4	06050 00 006
1	06050 00 007

7870
Soft Start - Nickel-Plated Brass/ Stainless Steel, Push-In & BSPP Thread


ØD	C	P/N
8	G1/4	7870 08 13
10	G1/4	7870 10 13
10	G3/8	7870 10 17